

EQUIPMENT SHEET

QUEEN OF THE NETHERLANDS
TRAILING SUCTION HOPPER DREDGER



CONSTRUCTION/CLASSIFICATION

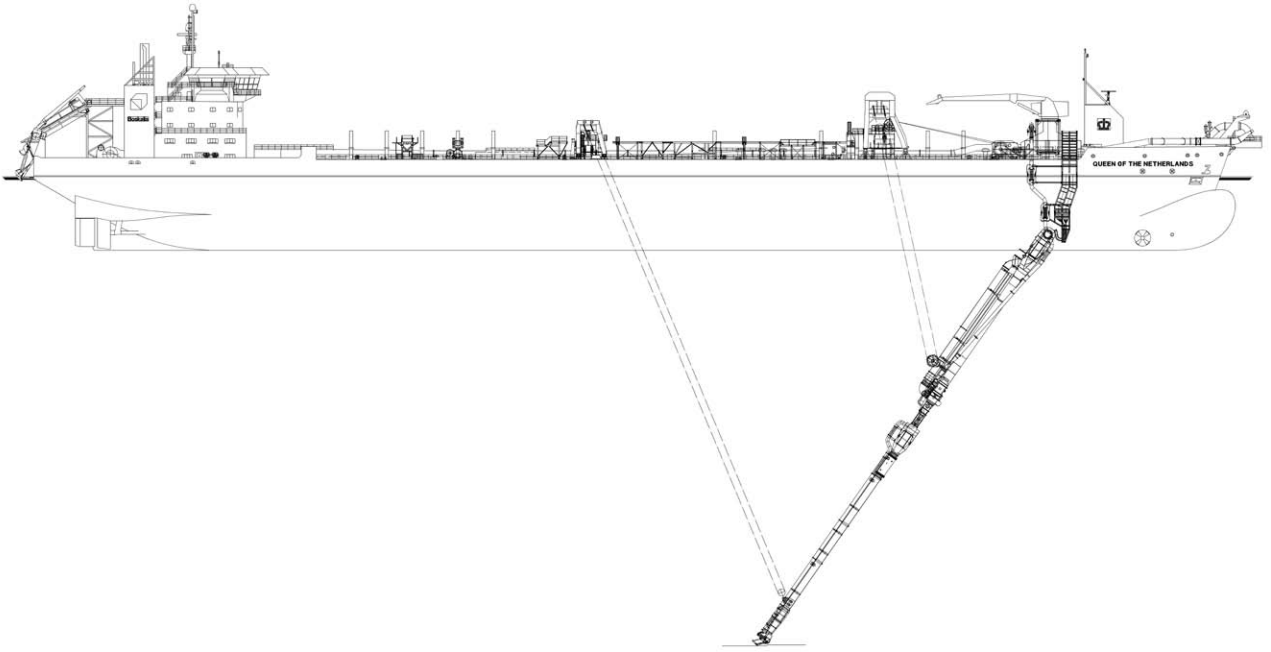
Built by	Verolme Shipyard Heusden B.V./ Keppel Shipyard Singapore
Year of construction	1998
Year of modification	2009
Classification	B.V. I ✕ HULL ✕ MACH ✕ AUT-UMS Hopper dredger Dredging within 15 miles from shore, or within 20 miles from port, dredging over 15 miles from shore with H.S. ≤ 3.5m Unrestricted navigation Mon-shaft

FEATURES

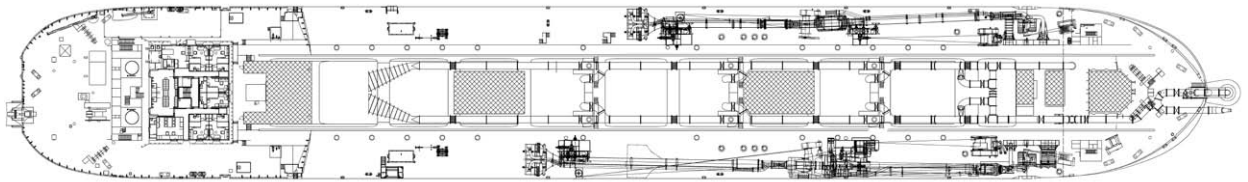
3,500 kW Submersible dredge pump unit in SB suction pipe.
Optional dredging depth 83 m at PS, with submersible dredge pump.
Optional dredging depth 115 m SB and PS.
Optional dredging depth 160 m SB.

MAIN DATA

Gross tonnage	33,423
Length overall	230.71 m
Breadth	32.00 m
Moulded depth	15.90 m (Aft ship)/ 16.85 m (Mid ship)
Max. draught Int. load line	10.387 m
Max. draught dredging load line	13.674 m
Carrying capacity (D.W.)	59,168 t
Hopper capacity	35,500 m ³
Suction pipe diameter	2 x 1,200 mm
Max. dredging depth	PS: 67 m / SB: 67/83 m with submersible dredge pump.
Discharge systems	24 Bottom door sections/Pump ashore/Rainbow installation/ Back dumping
Sailing speed loaded	16.0 kn
Total installed power	27,634 kW
Dredge pump output	SB: 7,000 kW (inboard and outboard dredge pump in series) PS: 6,000 kW (inboard dredge pump only)
Jet pump output	3 x 1,000 kW
Pump ashore output	2 x 6,000 kW
Propulsion power sailing	23,000 kW
Bow thruster	2,650 kW



SIDE VIEW



TOP VIEW DECK LEVEL