

EQUIPMENT SHEET

BEAR
OFFSHORE VESSELS /
ANCHOR HANDLING TUG SUPPLY (AHTS)



CONSTRUCTION/CLASSIFICATION

| | |
|----------------------|--|
| Year of construction | 1999 |
| Classification | A1, Fire Fighting vessel Class 1, AMS, ACCU, DPS-2 |
| IMO number | 9185932 |
| Call sign | ORRV |
| Flag | Belgian |
| Port of registry | Antwerp |
| Trading area | Worldwide/unrestricted |

FEATURES

| | |
|-----------------------|---|
| Accommodation | 24 berths 8 x single cabins 4 x double cabins 2 x four person cabins |
| Bunker capacity | fuel 930 m ³ fresh water 522 m ³ |
| Other tanks for cargo | Drill water 925 m ³ Base oil 167 m ³ Brine 582 m ³ Liquid mud 615 m ³ Dry bulk 240 m ³ |
| Positioning | Kongsberg DP II (K-pos) |

MAIN DATA

| | |
|---------------------------|-----------------------|
| Length overall | 73.50 m |
| Breadth moulded | 16.40 m |
| Depth moulded | 8.00 m |
| Max draught | 6.90 m |
| Deadweight at max draught | 2,900 t |
| Gross tonnage | 2,590 GT |
| Bollard pull ahead | 187 t |
| Speed max | 15 kn |
| Speed economic | 10 kn |
| Deck area | 550 m ² |
| Max deck cargo | 1,000 t |
| Deck strength | 5-10 t/m ² |

PROPULSION AND MAIN SYSTEMS

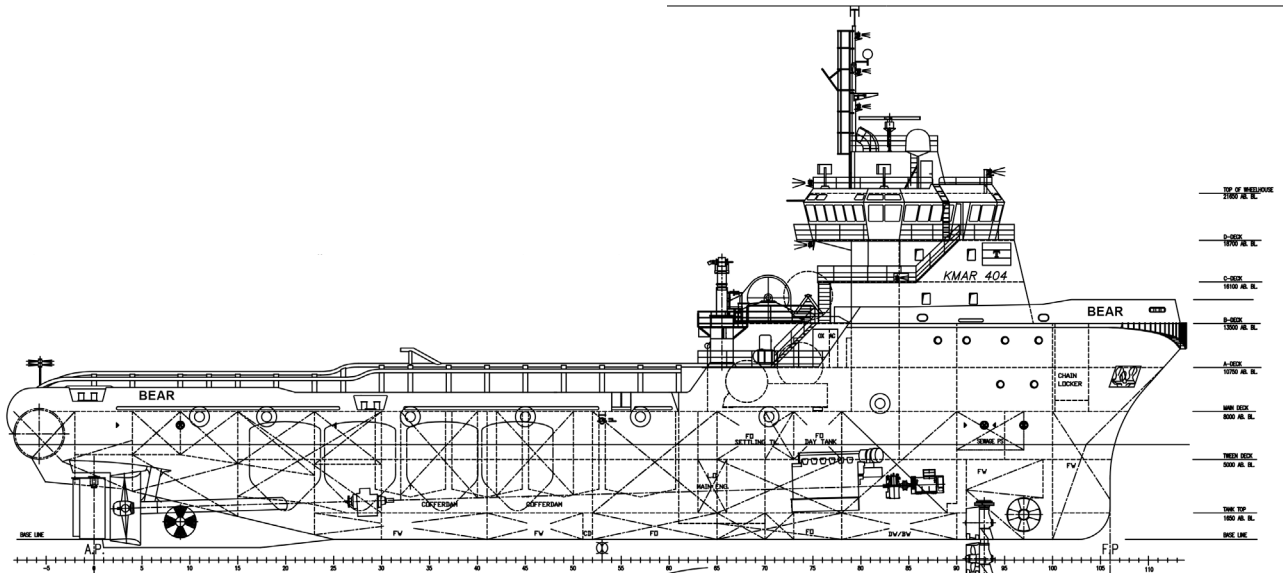
| | |
|-------------------|----------------------------------|
| Main engine set 1 | 1 x 5,530 kW 750 rpm |
| Main engine set 2 | 1 x 5,530 kW 750 rpm |
| Main propulsion | 11,060 kW |
| Steering gear | 2 x flaprudder |
| Forward azimuth | 1 x 800 kW, retractable |
| Bow thruster | 1 x 800 kW, tunnel |
| Stern thruster | 1 x 800 kW, tunnel |
| Fire fighting | FiFi 1, 2 x 1,200 m ³ |

DECK EQUIPMENT

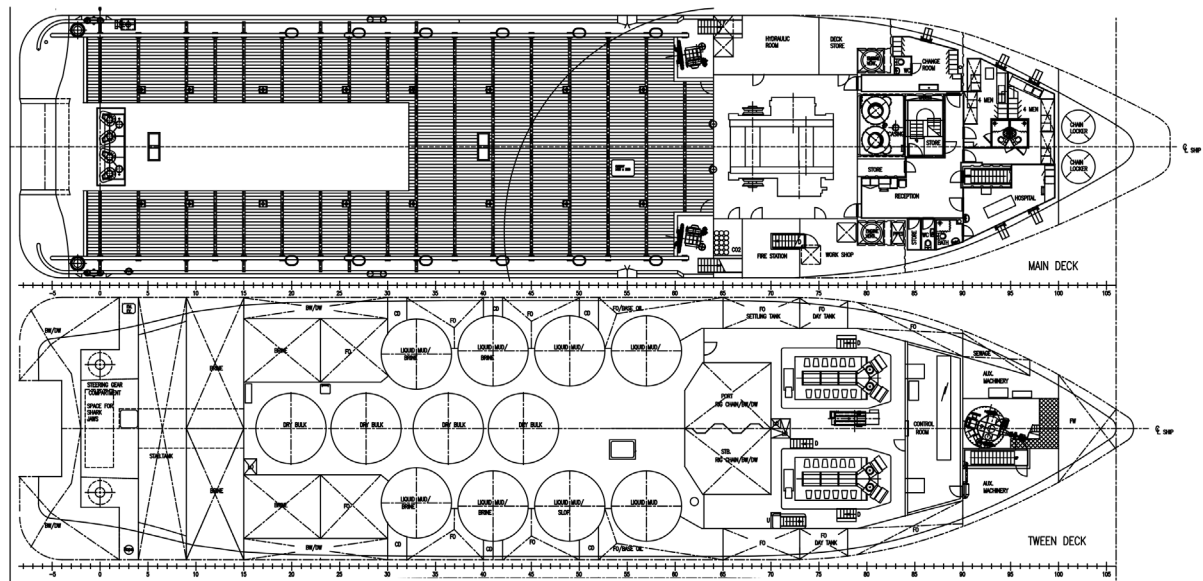
| | |
|------------------------------------|--|
| Towing and anchor handling winches | Brattvaag SL 300 t pull / 400 t break 2 x 2,000 m of 76 mm wire |
| Rope reels | Brattvaag 20 t 2 x 2,000 m of 76 mm |
| Forward winch | Brattvaag 16.4 t winlass |
| Capstan winches | Brattvaag 5 t |
| Tugger winches | Brattvaag 2 x 10 t |

DECK EQUIPMENT

| | |
|---------------|----------------------------------|
| Stern roller | L: 6.0 m x 3.0 m diam. SWL 500 t |
| Crane | 5 t @ 14 m |
| Towing pins | Karmoy KWT 350-800 / SWL 240 t |
| Karmoy pins | 2 x 500 t SWL |
| Gypsy wheels | 2 x 76 mm / 2 x 84 mm |
| Chain lockers | capacity 2 x 130 m ³ |



SIDE VIEW



TOP VIEW DECK LEVEL/TWEEN DECK