

EQUIPMENT SHEET

BOKA SOUTHERN OCEAN
CONSTRUCTION SUPPORT VESSEL



CONSTRUCTION / CLASSIFICATION

Built by	Metalships & Docks, Vigo, Spain
Year of construction	2010
Classification	BV ✕ HULL ✕ MACH, Special service - Construction Support vessel SP120, Unrestricted navigation COMF-VIB 3, ✕ AUT-UMS, ✕ SYS-NEQ-OSV, CLEANSHIP, ✕ HEL, ✕ DYNAPOS AM/AT R
Flag	Malta
Port of registry	Valletta

FEATURES

Accommodation	120 berths, 50 x single cabins and 35 x double cabins
Client & office facilities	1 x offline office on 01 ACC 1 x online office on 04 ACC 1 x conference room 1 x briefing room/cinema
Hospital	2 berths
Mess room	60 seats
Recreation room	50 seats
Conference room	10 seats
Reception room	Reception room for helideck
Recreation facilities	Gymnasium, sauna and cinema

CAPACITIES

Bunker capacity	Approx. 1,500 m ³
Other tanks for cargo	Potable water: approx. 600 m ³ Ballast water: approx. 7,600 m ³
Freshwater gen.	2 of each 25 m ³ per day

MAIN DATA

Length overall	133.6 / 136.6 m with helideck
Length BP	120.4 m
Beam	27.0 m
Draft max	6.85 m
Depth main deck	9.7 m (2,360 m ²)
Deadweight	Approx. 10,000 t
Main deck area	Approx. 2,360 m ²
Deck strength over all	10 t/m ²
Deck hatches	Two 4 m x 3 m hatches

PROPULSION AND MAIN SYSTEM

Main engine (electric driven)	Wärtsilä, 4 x 3,360 kW
Propulsion	2 x Azipull thrusters, RR Ulstein Aquamaster, each 3,500 kW
Bow thruster	1 x RR swing up thruster 1,500 kW 2 x RR tunnel thrusters 1,500 kW each

ELECTRIC POWER GENERATION

Main generator	4 x 3,230 kW
Harbour generator	595 kW

DYNAMIC POSITIONING SYSTEM

DP System	DP2 - Kongsberg Maritime K-Pos 21
Class	DnV DYNPOS-AUTR, complies NMD class 2
Reference system	2 x Kongsberg HiPAP 501 1 x Kongsberg Seatex DPS 132 1 x Kongsberg Seatex DPS 116 LTW Taut Wire Mk15 Kongsberg RADIUS 1000 Dual Fan Beam
ERN	(97, 96, 87, 22)

ROV SYSTEM

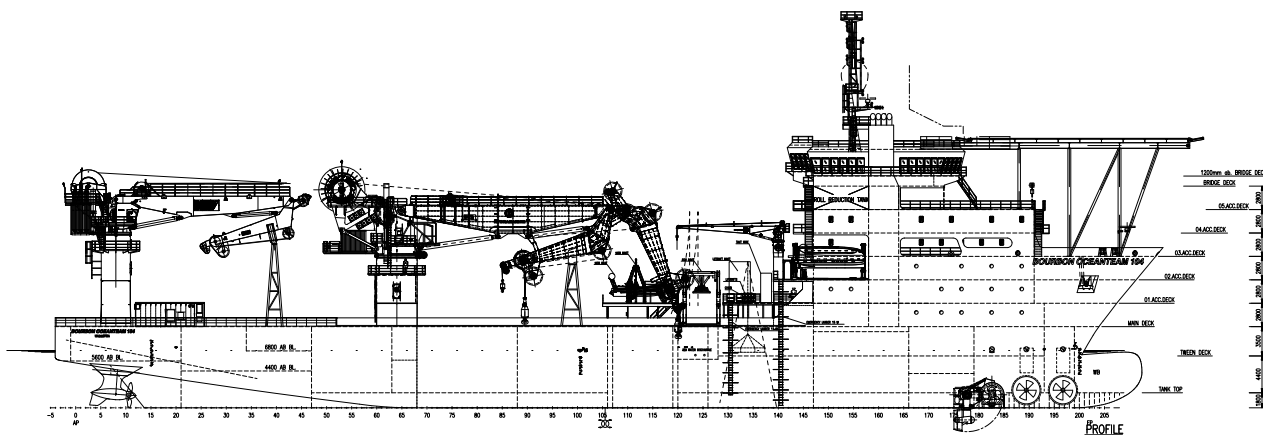
ROV (optional)	2 x WROV 150 BHP
----------------	------------------

DECK EQUIPMENT

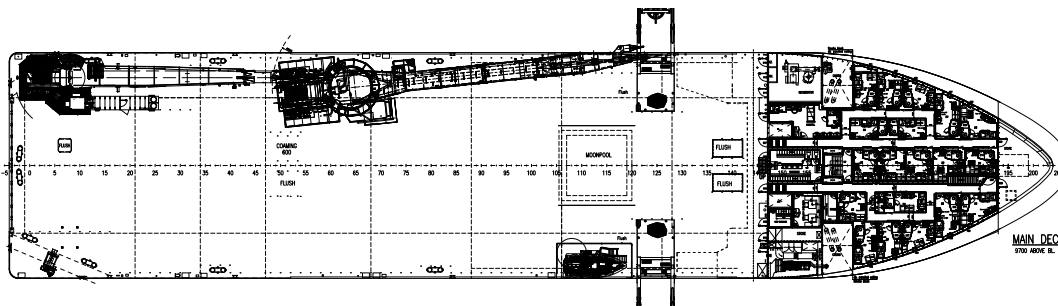
Main crane	MacGregor AHC Offshore Knuckle Jib Crane 250 t @ 10 m, 70 t @ 35 m Main: 2,570 m, Whip: 1,815 m wire 20 t @ 36 m
Auxiliary hoist	
Aft. crane	NOV AHC Offshore Knuckle Jib Crane 1/2 Falls, 90/110 t @ 12 m 30/30 t @ 30 m, Main: 1,895 m, Whip: 1,465 m wire
Auxiliary hoist	10 t @ 30 m
Provision crane	SWL 5 t @ 12 m
Moonpool	7.2 m x 7.2 m with hatch
Mooring winch FWD	2 x 20.6 t 8-16 m/min @ first layer
Mooring winch AFT	2 x 15 t 15 m/min @ first layer (low speed) 2 x 4.8 t 46 m/min @ first layer (high speed)
Stabilising equipment	2 x passive roll reduction tanks 2 x anti heeling systems

HELIDECK

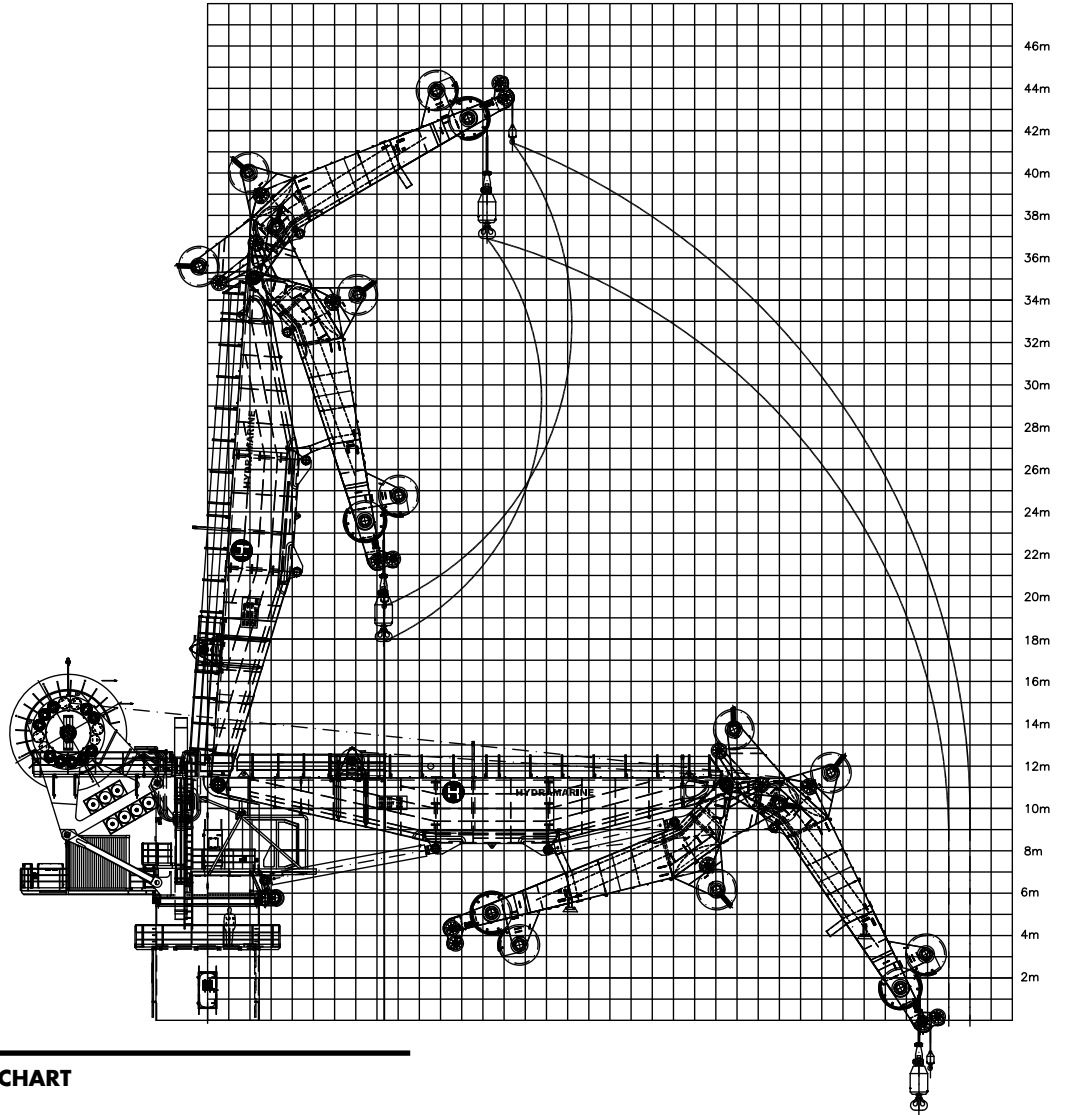
Size	D-Value 20.88 m (size 26.1 m) Suitable for Sikorsky S-92 (12.8 t)
------	--



SIDE VIEW

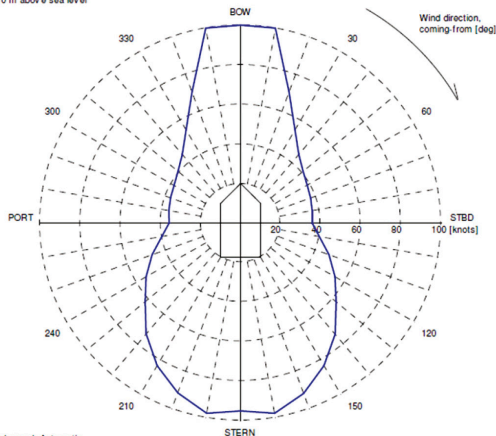


TOP VIEW DECK LEVEL



250 T CRANE LOAD CHART

VARIABLE WIND AND WAVES
Limiting 1 minute mean wind speed in knots
at 10 m above sea level



Wind speed: Automatic
Significant wave height: IMCA (North Sea)
Mean zero up-crossing period: IMCA (North Sea)
Rotating tidal current: 1.00 knots
Rotating wind induced current: 0.000 Uwi knots

Boskalis
PO Box 43
3350 AA Papendrecht
The Netherlands
T +31 78 69 69 000
offshore.energy@boskalis.com
www.boskalis.com/offshore