



CONSTRUCTION / CLASSIFICATION

Vessel built by	Metalships & Docks, S.A. Vigo Pontevedra, Spain
Year of construction	2012
Classification	DNV 1A1, DYNPOS-AUTR, EO, DK (+), CLEAN, COMF-V (3) CARGO SHIP, NAUT-OSV (A), HELIDK
IMO	9433183
Call sign (flag)	9HA2997 (Malta)
Port of registry	Valletta

FEATURES

Accommodation	129 berths, 15 x 1 man cabins and 57 x 2 man cabins
Client & office facilities	1 x office on 01 ACC 1 x representatives office on 02 ACC 1 x inspector's office on 02 ACC 1 x conference room on 03 ACC (PRT) 1 x field engineer's office on 03 ACC (STB)
Hospital	2 berths
Mess room	58 seats
Recreation room	43 seats
Internet room	4 seats
Conference room	10 seats
Helideck reception room	10 seats
Recreation facilities	Gymnasium, sauna

CAPACITIES

Bunker capacity	Approx 2,000 m ³ @ 100%
Potable water	Approx 832 m ³ @ 100%
Ballast water	Approx 7,142 m ³ @ 100% m ³
Lube oil and hydraulic oil	Approx 158 m ³ @ 100%
Freshwater gen.	2 x 25 m ³ /day Evaporators 1 x 25 m ³ /day RO plant

MAIN DATA

Gross tonnage	10,764 GT
Net tonnage	3,230 NT
Length overall	132.44 m 135.65 m (with helideck)
Length BP	120.4 m
Beam	30.0 m
Max. draft	6.85 m
Depth main deck	9.70 m
Deadweight	9,800 t
Main deck area	2,000 m ²
Deck strength over all	10 mt/m ²
Deck hatches	4

POWER AND PROPULSION

Distribution 690 V, 440 V, 230 V, 60 Hz

Main generators Wärtsilä 4 x 3,360 kW

Aux generator Wärtsilä 1 x 1,600 kW

Emergency generator Caterpillar 1 x 994 kW

 Propulsion 2 x 3,500 kw Azipull thrusters,
 AZP 120CP Aquamaster,
 RR (Kongsberg)

 Bow thruster 2 x 1,500 kw tunnel thrusters,
 RR (Kongsberg)
 1 x 1,500 kw retractable azimuth
 thruster, RR (Kongsberg)

DYNAMIC POSITIONING SYSTEM

DP System DP2 - Kongsberg Maritime K-Pos 21

Class DNV AUTR, IMO Class 2

 Reference system 1 x Kongsberg HiPap 500
 1 x Kongsberg Seatex DPS 132 DGPS
 1 x Kongsberg Seatex DPS 232 DGPS
 1 x Bandak Light Weight Taut Wire
 Mk 15-300
 1 x Fan Beam MK4.1 2000
 1 x Veripos DGPS

 Sensors 2 x Wind Sensors- Gill Ultrasonic
 3 x MRU
 3 x Gyro Compass-C-Plath Navigat X

ERN 99, 98, 96, 83

ROV SYSTEM

ROV (optional) Not fitted at the moment

DECK EQUIPMENT

 Main crane NOV Crane 400 mt
 1 @fixed boom AHC 440 ST @ 49 ft
 (2 fall), 1,969 ft wire rope;
 (1 @ fixed boom 400 mt @ 15 m
 (2 fall), 600 m wire rope)

 Auxiliary hoist Auxiliary Hoist 50 mt @ 42 m,
 300 m wire rope

 Aft. crane NOV Knuckle Boom Crane 100 mt
 Knuckle Boom AHC 110 ST @ 52 ft,
 10,794 ft wire rope; aux hoist 11 ST
 @ 112 ft; 1,312 ft wire rope 1 @
 knuckleboom AHC 100 mt @ 16 m,
 3,290 m wire rope

 Auxiliary hoist Aux hoist 10 mt @ 34 m,
 400 m wire rope

 Provision crane 2x TTS, SWL 2 t @ 12 m,
 20 m wire rope

Moonpool closed

Mooring winch FWD 2x 17 t (IBERCISA)

Mooring winch AFT 1 x 15 t (IBERCISA)

Mooring winch bollard AFT 2x 10 t (IBERCISA)

Stabilising equipment 1 x anti heeling system

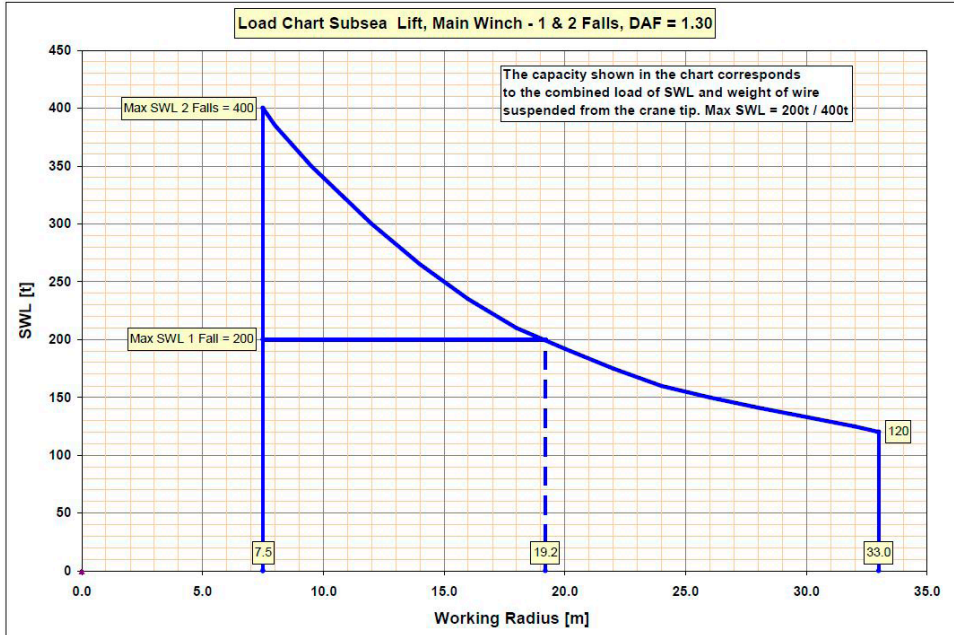
HELIDECK

 Size Actual diameter: 26.40 m
 D Value: 21
 T Value: 12.8 t
 Deck height above sea level:
 21.8 m @ 6.85m draft
 Suitable for Super-Puma AS 332/
 Sikorsky S-92 (12.8 t)

V4746-Z-RD-010

NORTH OCEAN 105 - 400T CRANE

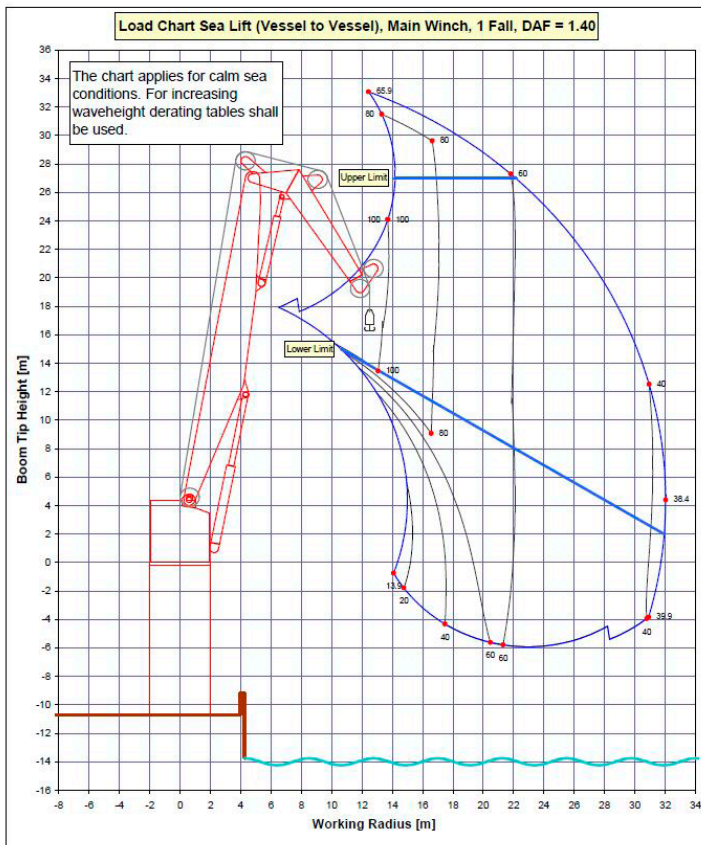
LOAD CHART



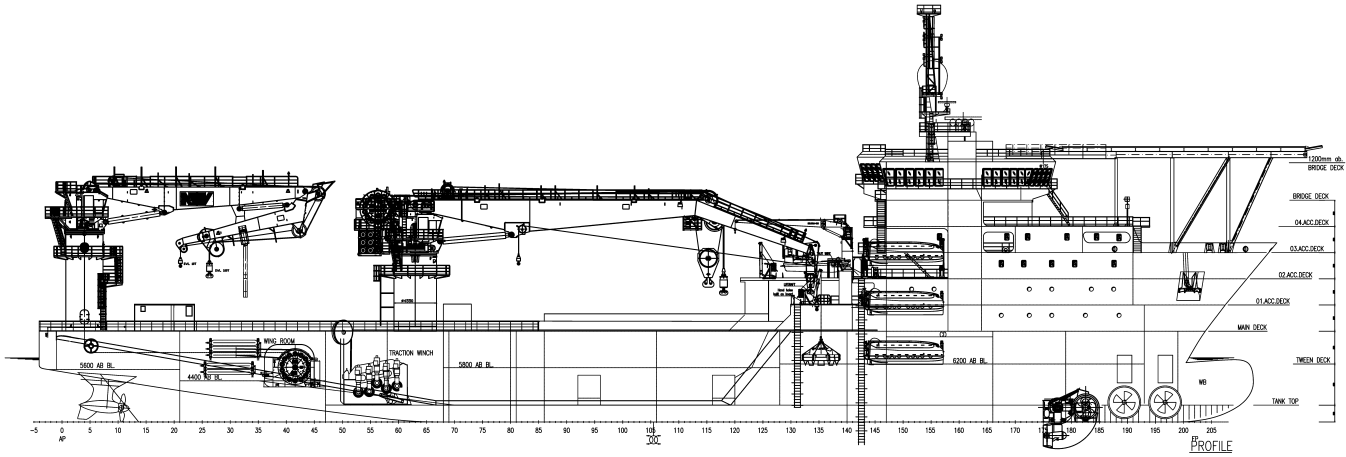
V4747-Z-RD-010

NORTH OCEAN 105 - 100T CRANE

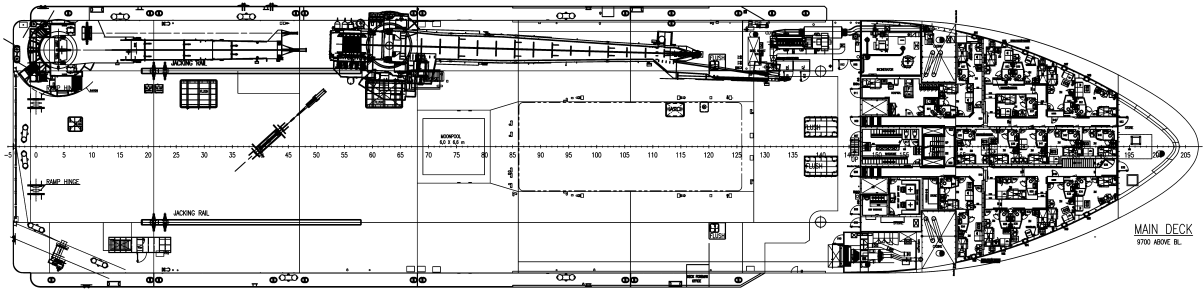
LOAD CHART



CRANE LOAD CHARTS



SIDE VIEW



TOP VIEW DECK LEVEL