

**BOKA TIAMAT**

MULTIPURPOSE DP2 OFFSHORE CONSTRUCTION VESSEL


**CONSTRUCTION / CLASSIFICATION**

Vessel built by	VARD BRATVAAG AS, Norway
Year of construction	2019
Classification	1A1 Offshore service vessel Battery (Power), BWM(T), Clean(design), COMF(C-3, V-3) Crane DK(+), DYNPOS(AUTR), EO, HELDK, NAUT(AW), Recyclable, SF, SPS
IMO	9792527
Call sign (flag)	ORUE (Belgium)
Port of registry	Antwerpen

**FEATURES**

Accommodation:  
26 x single cabins & 28 x double cabins, all with private facilities and fully air conditioned, 1 x client office, 1 x project office, 1 x ships office, 1 x conference room, 1 x lounge, 1 x gym, 1 x hospital

Positioning	Dynamic positioning class II, Rolls Royce Icon DP system
-------------	--

ERN	(99, 99, 99, 97)
-----	------------------

**MAIN DATA**

Length overall	98.1 m
Length BP	89.7 m
Breadth moulded	20.0 m
Depth moulded	8.5 m
Maximum draft	6.0 m
Design draught	5.5 m
Deadweight	3,000 t
Gross tonnage	6,133 GT
Netto tonnage	3,000 NT
Deck area	1,000 m <sup>2</sup> (55.5 m x 18 m)
Deck cargo capacity	1,400 t @ 10 t/m <sup>2</sup>

**TANK CAPACITIES**

Fuel	1,619 m <sup>3</sup>
Potable water	730 m <sup>3</sup>
Ballast water	2,660 m <sup>3</sup>
MEG	417 m <sup>3</sup>

**DISCHARGE CAPACITY**

Fuel oil/discharge pump	2 x 75 m <sup>3</sup> /hr @ 3 bar
Fuel oil transfer pump	2 x 16 m <sup>3</sup> /hr @ 3 bar
Fresh water	2 x 75 m <sup>3</sup> /hr @ 2 bar
Potable water	2 x 150 m <sup>3</sup> /hr @ 4 bar

## BOKA TIAMAT

MULTIPURPOSE DP2 OFFSHORE CONSTRUCTION VESSEL

### PROPULSION AND MAIN SYSTEM

Main engine (Hybrid)	2 x 2,350 kW/1,800 rpm - Caterpillar 3516TA C 2 x 944 kW/1,800 rpm - Caterpillar C32 ACERT 1 x 1,786 kW/1,800 rpm - Caterpillar 3512 C
Main propulsion/ Aft thruster	2 x Azimuth propellers Make: RRM, max. continuous power each 2,000 kW
Side thrusters (FWD)	2 x Tunnel thrusters. 1,650 kW Make: Rolls Royce, TT2400
Retractable thrusters	1 x 1,500 kW Azimuth propeller FWD Make: RRM TCNS 100 FP
Sewage treatment plant	Ecomotive STP 120 persons capacity
Fresh water maker	Reverse osmosis plant 15 à 25 m <sup>3</sup> /day
Oily water separator	1 x Alfa laval

### ELECTRIC POWER GENERATION

Main generator	2 x 832 kW/1,800 rpm - MJRM 400 MB B20 1 x 1,512 kW/1,800 rpm - MRJM 450 LB4 B20 2 x 2,000 kW/1,800 rpm - MRJM 500 MC4 B20
Hybrid system	1x SeaQ energy storage system (ESS) with following features: Peak Shaving mode/DP mode/Harbor mode/Shore Isoch mode manual charge mode/emergency mode (1,300 kw for 12 minutes)
Emergency generator	1 x 274 kW CAT C9

### OFFSHORE SUB-SEA CRANE

Model	McGregor 120 t Active heave compensation Offshore knuckle jib crane with main winch on crane
Type	HMC 3568LKO 250-32 (1200-12) AHC
Hook travelling distance	3,000 m
Max hook height	39 m above main deck
Wire	dia. 68 mm, galvanized, nonrotating type, weight dry/wet 22.60/19.2 kg/m
Lifting capacity	120 t @ 16 m (shipboard), 120 t @ 13 m (offshore), 25 t @ 32 m

Min. working radius	6.2 m
Main winch hoisting speed	0-60 t - 0-60 m/min, 60-120 t - 0-30 m/min
Slewing angle	360 degrees unlimited
Whip winch	Wire length 2,650 m, SWL-20 t, hoisting speed -80 m/min
Personal lift	1.5 t

### DECK EQUIPMENT

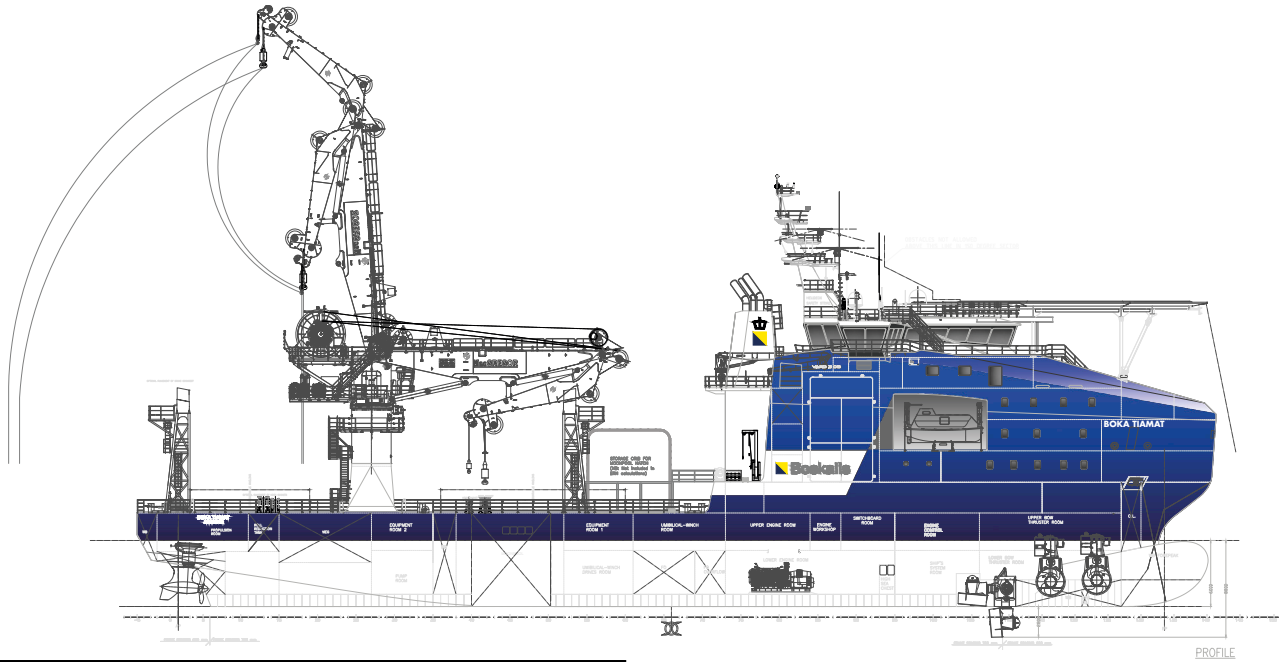
Mooring winches	2 x 13 t, 2 x 10 t electric driven winch. Make: NDM
Tugger winch	2 x 15 t
Deck/provision crane	McGregor HMC 1077 LK 3-15 (PB15) crane SWL 3 t @ 15 m
Helideck	dia. 20.88 m, 12.8 t
Moonpool	7.2 m x 7.2 m (flat bottom open)

### FIRE-FIGHTING AND SAFETY EQUIPMENT

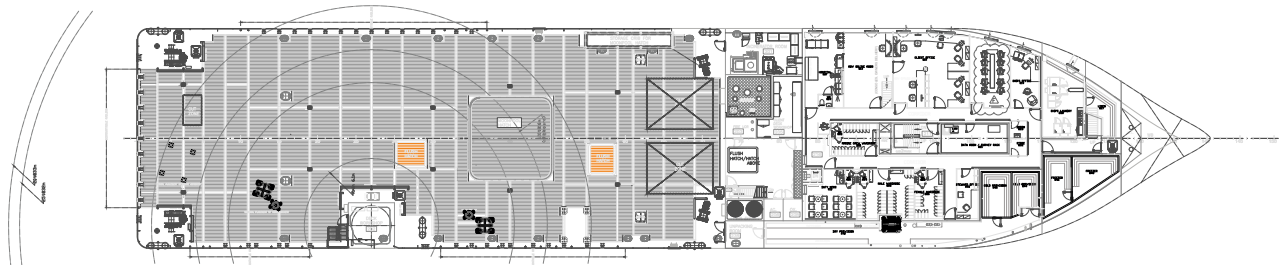
Life raft	4 x 25 persons/2 x davits
Life boat	2 x 41 person a 95 kg/48 person a 82.5 kg (SB Life boat certified as rescue boat)
Fast rescue boat/davit	1 x FRC 15 person Make: Harding
Emergency fire pump	1 x 37 m <sup>3</sup> /h pump
Fixed Fire Fighting	Water mist system

### ROV SYSTEM

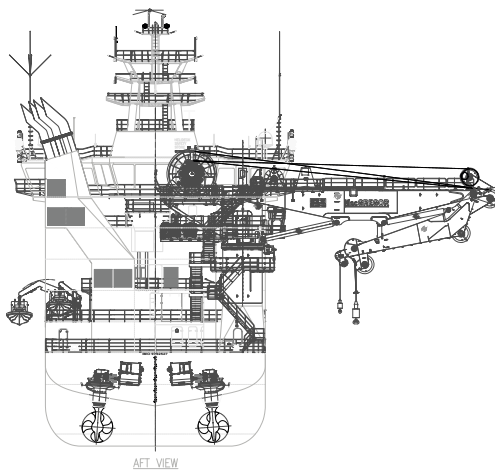
ROV facilities	ROV equipment: 2 x SH Group LARS – A - frames (SWL 15 t latched/ 22 t deployed) Under deck fitted AHC winches (SWL 13 t top layer/16 t bottom layer) ROV Hangar: ROV hangar for 2 x WROV Hydraulic controlled gate 2 x ROV workshops
----------------	---



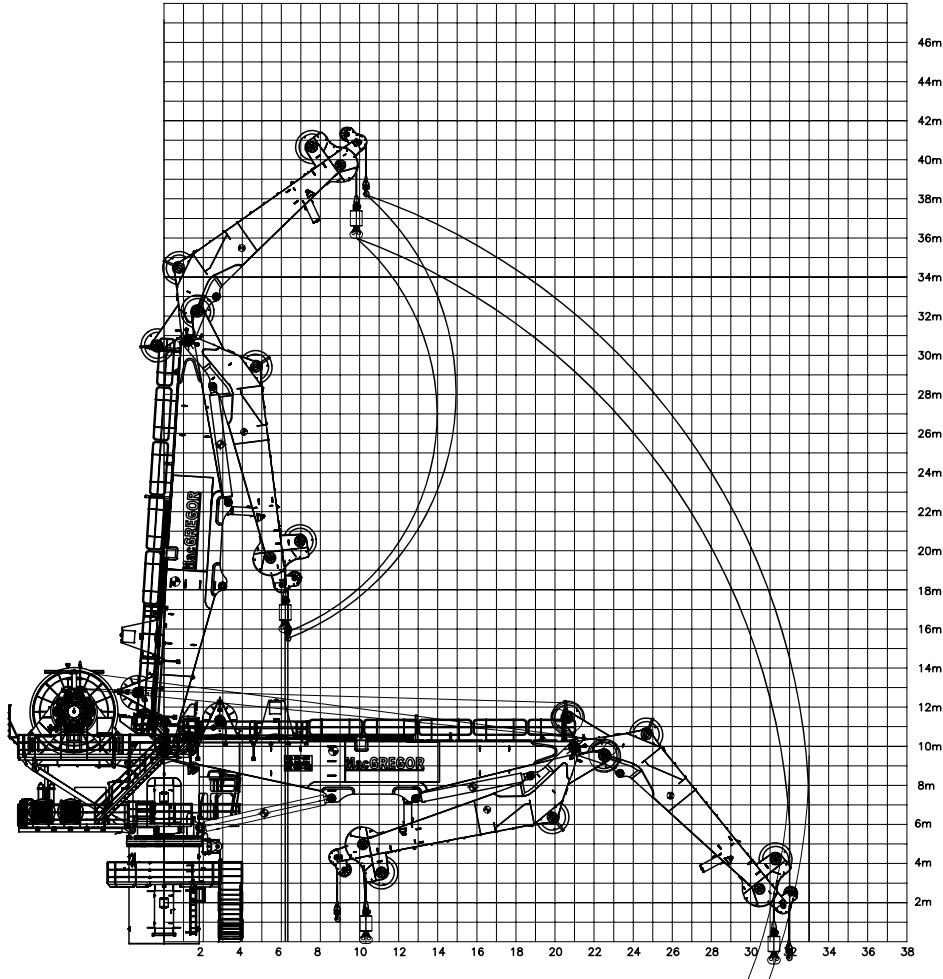
**SIDE VIEW**



**TOP VIEW DECK LEVEL**

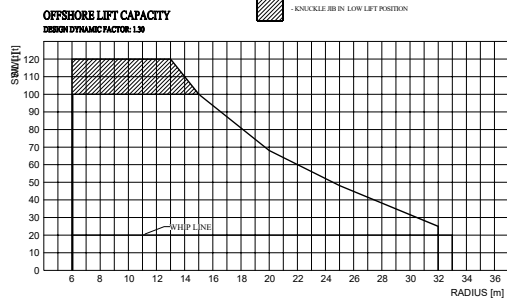
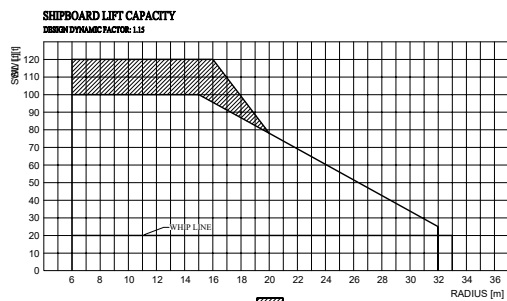


**AFT VIEW**



OFFSHORE/SHIPBOARD LIFT LOAD CHART FOR CALM SEA, H<sub>s</sub> = 0 m

MAXIMUM LOAD CAPACITY	SHIPBOARD [t]		OFFSHORE [t]	
	LOW LIFT	HIGH LIFT	LOW LIFT	HIGH LIFT
R0 = 6,1 m	120.0	100.0	120.0	100.0
R1 = 13,0 m	120.0	100.0	120.0	100.0
R2 = 15,0 m	120.0	100.0		100.0
R3 = 16,0 m	120.0	96.0		93.6
R4 = 20,0 m		78.0		68.0
R5 = 25,0 m		56.0		48.0
R5 = 30,0 m		33.8		31.6
R5 = 32,0 m		25.0		25.0
R6 <sub>max</sub> = 33,0 m (Whip line)		20.0		20.0



**DECK CRANE SIDE VIEW**