



CONSTRUCTION / CLASSIFICATION

Type of vessel	Cable Lay Pontoon
Place of build	Gdynia/Swinemünde
Year of build	2016
Classification	GL ✕ 100 A5 RSA (50) Pontoon "Cable Layer Barge" A-MC DP1
Flag	Federal Republic of Germany
Flag State Authority	BG Verkehr
Port of registry	Wilhelmshaven
Call sign	DCOX

MAIN DATA

Gross tonnage	8,129 GT
Net tonnage	2,438 t
Deadweight	9,264 t
Length overall	125.92 m
Length b.p.p.	115.20 m
Beam moulded	32.96 m
Depth moulded	6.60 m
Width moulded	32.00 m
Draught max. approx.	3.50 m
Fresh water capacity	237 m ³

Fuel oil capacity	255 m ³ red, 172 m ³ white (tax free)
Refrigerator/freezer	Yes
Forecastle height	6.00 m

MACHINERY

Generators	3 x Mitsubishi S12R-MPTAW 1,050 kW 1,312 kVA
Emergency generators	1 x John Deere 6068 HF 279 125 kW 156 kVA
High pressure flushing system	2 x Holland special pumps 1,200 m ³ /h, driven by 2 x Mitsubishi S12R 900 kW engines

WINCHES / ANCHORS

Main anchor winch	75 t (MBL = 112 t)
Side anchor winch	56 t (MBL = 112 t)
Mooring system	7 Point
Main anchor wire	2,000 m, 40 mm
Side anchor wires	1,000 m, 40 mm
Anchors	Delta Flipper, 1 x 7.5 t, 6 x 5.0 t

CRANE & LIFTING APPLIANCES

Deck crane	Heila HLRM90/4S
------------	-----------------

DECK AREA AND SERVICES

Available deck space (unmobilised)	2,196 m ²
Deck load max.	15 t/m ²
FiFi unit	Yes
Moon pool	Yes

NAVIGATION, COMMUNICATION & SURVEY

R4 AIS System	JOTRON TR-8000
GPS/DGPS pos. sensor	2 DGPS-Furuno GP170, JLR 4340
Echo sounder	Furuno FE-800
EPIRB	1
Radar transponder for rescue boat	2 x Sailor SART II
NAVTEX receiver	JRC NCR 333
Wind- and weather measuring system	2 Anemometer Raymarine i60
Satelite communication	
Network	Yes
Television	Yes
Speed log	Skipper Compact
Gyro compass	Anschütz Std 22
Attitude/heading	2 x Gyro
DP Class	DP1

TECHNICAL STANDARDS AND REGULATIONS

Hulls/barges	DNV GL
Operation & registration	Hamburg

THRUSTER

Type	Z-drive azimuth thrusters ZF 5000, Cat C32
Classification society	DNVGL
Amount	4
Power input Pb	825 kW
Calculated bollard pull	43 t
Input speed	7.6 kn

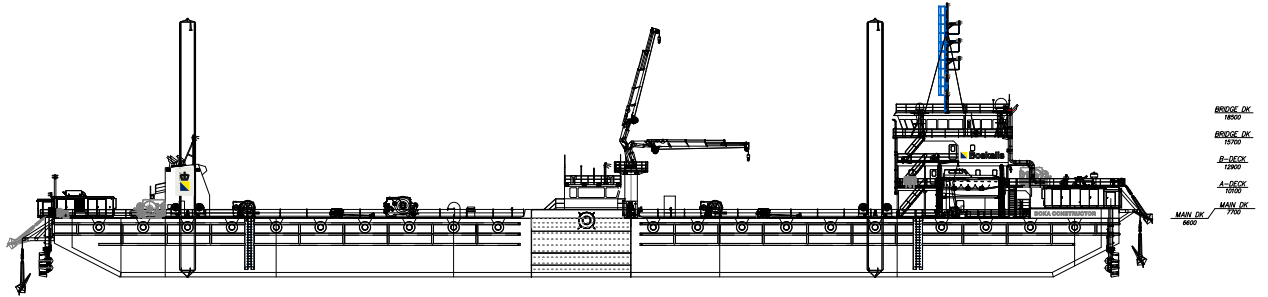
ACCOMMODATION

Total accommodation	50 persons
Single cabins	2
Double cabins	24
Offices	2
Control station	1
Health treatment room	1
Gym	1
Enclosed rescue boat with davit	1
Enclosed life boats with davit	2
Life rafts	4

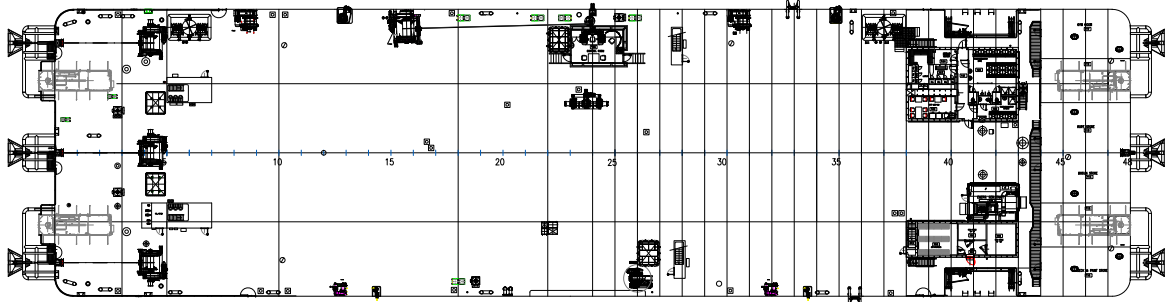
POWER CONNECTIONS

Shore connection	400 A
------------------	-------





SIDE VIEW



TOP VIEW MAIN DECK LEVEL



TOP VIEW ENGINE ROOM LEVEL