



CORPORATE BROCHURE

Challenges Secured



Smit Lamnalco The Company



The integration of two well-established brands Lamnalco & Smit Terminals has created a major new offshore marine services provider: Smit Lamnalco.

Smit Lamnalco has over 50 contracts worldwide, employs more than 2,500 staff and operates and manages a modern diverse fleet of approximately 200 vessels in over 30 countries.

Smit Lamnalco represents a significant step forward in integrated marine services, both in terms of the scale and geographical coverage of its operations. Smit Lamnalco is a world-class player in the market for specialised marine services to the oil and gas industry and has broadened its platform for further growth.

'WE ARE THE LEADING PROVIDER
OF INTEGRATED MARINE SERVICES'



Smit Lamnalco is backed by two strong shareholders: Royal Boskalis Westminster - one of the world's leading dredging companies, and the Saudi-based Rezayat Group - a leading engineering and trading venture. Each company has a 50% stake in Smit Lamnalco.

'A WORLD LEADER IN MARINE SERVICES FOR 50 YEARS'



1842

SMIT began providing vessels with a safe passage into the port of Rotterdam, the Netherlands



1963

An equal partnership between Rezayat and Boskalis Lamnalco is born



1978

Lamnalco 40% shareholding in ADPPOC (now known as Irshad)

1991

Lamnalco established a landmark in Nigeria and opened the first office in Port Harcourt

2005

Lamnalco opens office in Perth



2007

Lamnalco introduces the first multipurpose marine support vessels called the M-class



2010

Lamnalco introduces the next generation of M-class called the Super M

2011

Lamnalco acquires SMIT's Terminal and AHTS transport activities from Boskalis



2012

The successful integration of two well-established brands Lamnalco & SMIT Terminals has created a major new offshore marine service provider

Today

Smit Lamnalco is recognised as a world leader in marine services with the ability to expand and operate to the highest standards in challenging locations with an arrangement of specialised vessels to suit most marine services

History

Whether acting independently or through strategic partners, Smit Lamnalco prides itself on being able to work to international standards in any location. It has the know-how to establish efficient operations and supply corridors at short notice in remote areas and maximise local content.

Following the merger, Smit Lamnalco has restructured to focus on four core regions. These regions incorporate the following continents and countries:

- Africa
- Nigeria
- Eastern Europe, Russia Georgia, The Caspian Sea and Australasia
- Middle East, India, Sri Lanka, Pakistan and African Red Sea

Smit Lamnalco operates in these regions, either through joint ventures or stand-alone businesses.



'WORKING IN REMOTE LOCATIONS IS OUR STRENGTH'



Where We Operate



'WE HAVE LEARNED TO MANAGE COMPLEXITY, MITIGATE RISKS AND SIMPLIFY EXECUTION IN CHALLENGING LOCATIONS'

'WE MANAGE AND DELIVER'

Smit Lamnalco provides a wide range of marine services for the management of both onshore and offshore oil and gas facilities.

Services offered by Smit Lamnalco include:

- Berthing and unberthing of vessels
- Escorting
- Pilotage
- Fire-fighting and oil spill response
- Marine support and consultancy
- Marine support to loading and discharging of products both in terminals and floating facilities
- SPM subsea inspection, repair and maintenance
- Line and hose handling
- Marine mining solutions
- Safety and security
- Turnkey marine operations management
- Bunker supply
- LNG emergency response
- Anchor handling
- Dive and ROV support

Over the years, Smit Lamnalco has earned a reputation for innovation in the design and operation of offshore and terminal support vessels. These are customised to meet the specific requirements, including oil, gas and LNG facilities, both offshore and onshore and including SPM operations.

What We Do



Smit Lamnalco specialises in delivering customised and high quality marine support packages for oil and gas terminals. The company can be relied upon to provide a wide range of high performance terminal tugs tailored to meet the demands of any location, whether operating alongside protected jetties or in open water.

Working closely with clients, experienced project engineers can ensure the right assets match the required scope of work, from tugs and multi-purpose support vessels to pilot boats, mooring boats and fast security patrol craft.

Smit Lamnalco has been providing safe and reliable towage and associated marine services to onshore oil and gas marine terminals and ports since 1963, when the company was established to support oil exports from the Jebel Dhanna terminal in the Middle East. Smit Lamnalco now operates more than 30 terminals worldwide. These include crude oil, LNG, refined product and bulk loading facilities.

The range of services provided includes:

- Escort & Berthing
- Pilotage
- LNG emergency response
- Security
- Fire-fighting
- Pollution Control

Terminals Oil and Gas



Smit Lamnalco has developed a world-class capability to deliver innovative solutions for the LNG terminal sector and is committed to expanding its presence in this fast growing business. Based on decades of experience, the company has an in-depth understanding of the needs of this highly specialised branch of the industry, which means it can customise solutions to meet the very specific requirements of LNG/FLNG and FSRU operations.

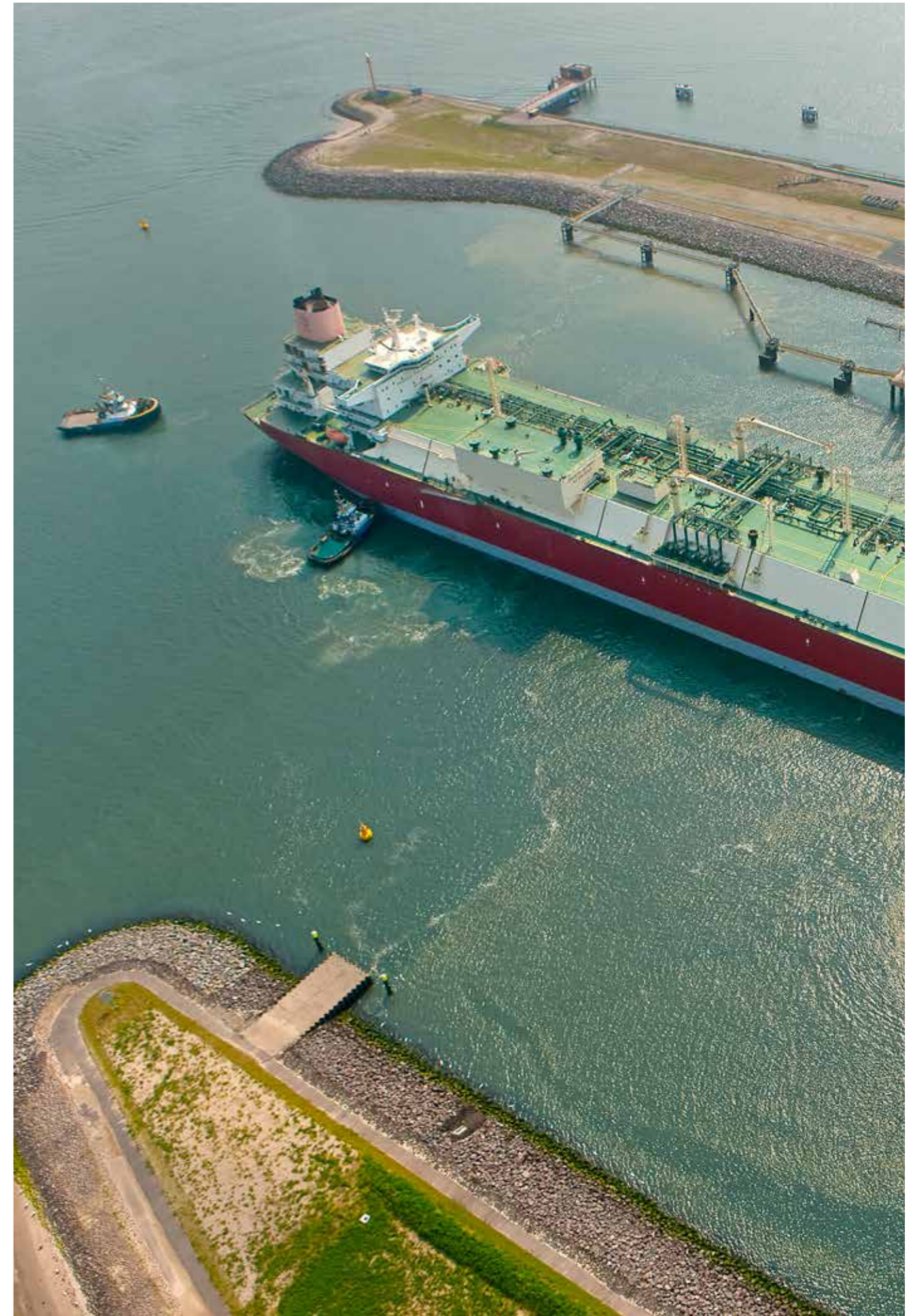
The company has at its disposal one of the world's most sophisticated and modern LNG terminal support fleets. This includes high performance tugs, with advanced LNG terminal capabilities, and also pilot boats and mooring vessels.

With our experience in offshore support vessels, this skill and experience can be adapted to the requirements of future FLNG facilities.



'WE ARE LOOKING FORWARD TO THE CHALLENGES OF FLOATING LNG'

LNG/FLNG/FSRU





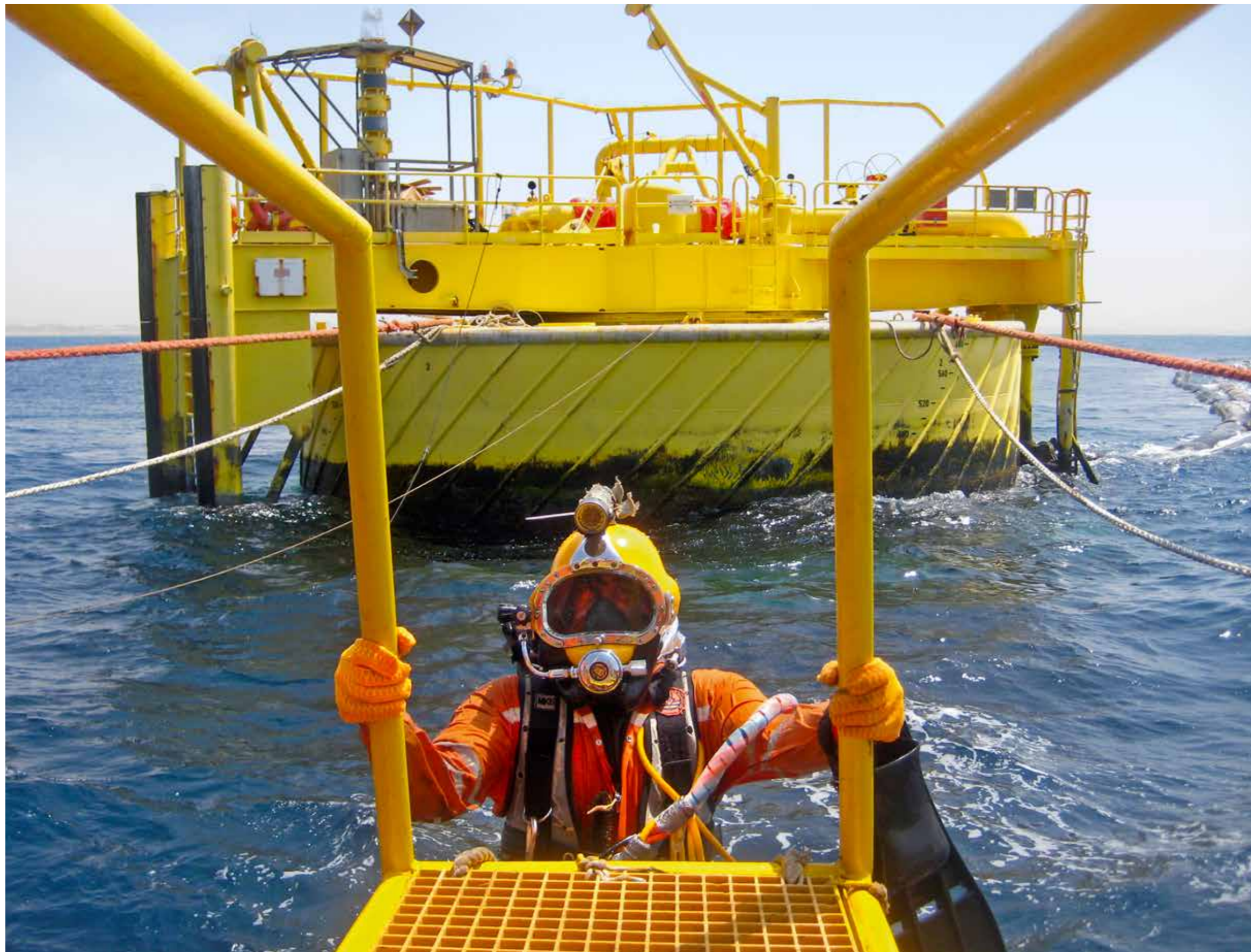
Smit Lamnalco has been a leading provider of marine support vessel to FPSO/FSO facilities for more than 50 years, we have one of the most modern fleets dedicated to FPSO/FSO support operations in the world. The company has earned an international reputation for innovation in designing and operating vessels that are tailored specifically to meet the needs of the floating facility, as well as the specific challenges presented by different theatres of operation.

The company has progressively modernised its fleet to meet the particular needs of FPSO/FSO operators. An example is the introduction of Azimuth APS90 and APS100 vessels, which are designed to operate alongside deepwater facilities even in very severe weather conditions. Further development and investment into the next generation of global FPSO/FSO multi-purpose support vessels is well underway.



'ALL-ROUND MARINE
SERVICE OFFSHORE'

FPSO / FSO Marine Support Service



Smit Lamnalco provides full turnkey marine support service to operators of single and multi-buoy terminals. Solutions provided to SPM clients are tailored according to the scope of services. As a result, a highly flexible, efficient and cost-effective service can be delivered. Whether an operator is looking for pilot boats, hose handling craft, pollution control vessels or high performance support craft with advanced SPM and IMCA-compliant diving capability, you can rely on Smit Lamnalco's 50 years of experience in this sector to meet the highest international standards.

'WE CONNECT MANAGE AND SERVICE'

'WE ARE THE WORLD'S N°1 MARINE SERVICES PROVIDER TO SPMs'

SPM Support Services



Depending on your offshore marine requirements Smit Lamnalco can provide you with vessels best suited to your operations.

The range of services provided includes:

- Anchor handling
- Towing
- Escorting
- Berthing
- Diving and ROV
- Supply
- Line and hose handling
- Marine pollution
- Fire fighting

'RELIABILITY AND
COMMITMENT'



Offshore Marine Support Services

Smit Lamnalco owns, operates and provides crewing for one of the most modern diverse FPSO/FSO/LNG, Terminal and SPM fleets in the world. The fleet consists of terminal tugs, offshore support vessels, supply, utility craft and crew boats. These vessels are employed in challenging locations around the world.

When it comes to designing and building new vessels to meet emerging requirements in specific regions, Smit Lamnalco's team of engineers and consultants work with leading classification societies and vessel designers to deliver dedicated project management for new build vessels.

Safety of operations is top priority and Smit Lamnalco's in-house state of the art tug manoeuvring simulator ensures that all crew members are fully trained in the demands of the particular area they will be working in and the vessel they will be operating.



Our Fleet



Safety, Health, Environment and Quality

Smit Lamnalco's commitment to Safety, Health, Environment and Quality (SHE-Q) management systems extends beyond our business and employees to sub-contractors, with training focused on the rigorous implementation of relevant policies and procedures in everyday operations.

Smit Lamnalco has achieved full ISO 9001/14001 and OHSAS 18001 Certification across the entire company for its integrated safety management system SLIMS. Smit Lamnalco Integrated Management System encompasses all activities undertaken by

Smit Lamnalco both onboard and ashore. Our system is fully integrated with the offshore industry's (OVMSA) guidelines. By adopting these standards Smit Lamnalco belongs to a select group of industry trendsetters.

We firmly believe that all injuries are preventable and that a "safe" environment is a "healthy" environment. Together with our customers, suppliers and contractors we are committed to actively promoting the highest standards of safety consciousness and discipline on all Smit Lamnalco vessels and within all shore-based operations.

Values

RELIABILITY: DELIVER WHAT WE PROMISE

INTEGRITY: DOING WHAT'S RIGHT, ALWAYS

SAFETY: PROTECT LIFE, ENVIRONMENT AND ASSETS

TEAMWORK: MOVE FORWARD WITH A COLLECTIVE SPIRIT

ENTREPRENEURSHIP: DARE TO DO NEW THINGS

Vision, Purpose and Values Smit Lamnalco

VISION

Become the leading provider of safe and cost-effective, integrated midstream marine services in challenging environments.

VALUES

- Reliability
- Integrity
- Safety
- Teamwork
- Entrepreneurship

PURPOSE

To provide 'best in class' marine services

Head office
Smit Lamnalco Netherlands

Waalhaven O.Z. 85
Port number 2204
3087 BM Rotterdam
The Netherlands
T +31 88 076 4800
F +31 88 076 4801
E info@smitlamnalco.com

Nigeria operations
Smit Lamnalco Nigeria

5th Floor Foreshore Towers
Osborne Road
Ikoyi Lagos
Nigeria
T +234 1 277 8719
F +234 1 277 8720
E info@smitlamnalco.com

America operations
Smit Lamnalco America

Rezayat Houston
4747 Bellaire Blvd, Suite 215
Bellaire TX 77401
United States of America
T +1 713 782 7396
F +1 713 782 0090
E info@smitlamnalco.com

Australasia operations
Smit Lamnalco Australia

Smit Lamnalco Australia Pty Ltd
Suite 10, 22 Railway Road
Subiaco WA 6008
Australia
T +618 6380 3600
F +618 9381 5390
E info@smitlamnalco.com

Middle East, Indian Subcontinent operations
Smit Lamnalco UAE

Al Buhaira Tower
Buhaira Corniche
PO Box 5687, Sharjah
United Arab Emirates
T +971 6 517 2222
F +971 6 574 9090
E info@smitlamnalco.com

Africa operations
Smit Lamnalco Africa

Waalhaven O.Z. 85
Port number 2204
3087 BM Rotterdam
The Netherlands
T +31 88 076 4800
F +31 88 076 4801
E info@smitlamnalco.com

India operations
Smit Lamnalco India

702 Trade Center
Bandra Kurla Complex
Bandra East
Mumbai 400 051
India
T +91 22 613 35950
F +91 22 265 20201
E info@smitlamnalco.com

Russia operations
Smit Lamnalco Russia

24 Mira str., 3rd Floor
Novorossiysk
Russia, 353900
T +7 8617 300 630
F +7 8617 300 633
E info@smitlamnalco.com

SMITLAMNALCO.COM



Smit
Lamnalco