

# EQUIPMENT SHEET

## FORTE

SEMI-SUBMERSIBLE DP-2 HEAVY TRANSPORT VESSEL



### CONSTRUCTION/CLASSIFICATION

Built by	Guangzhou Shipyard Int. Co. Ltd 2012
Year of conversion	2020
Classification	Bureau Veritas   ✕ HULL, ✕ MACH, ✕ AVM-IPS, ✕ AUT-UMS, ✕ DYNAPOS AM/AT R, Special service, Semi submersible heavy lift vessel, unrestricted navigation, CPS (WBT), MON-SHAFT, CLEANSHIP, ICE CLASS ID, INWATERSURVEY
IMO number	9592848
Flag	Malta
Port of registry	Valletta

### MAIN DATA

Length overall	216.75 m
Breadth moulded/max	43.00 m
Depth	13.00 m
Draft submerged at FPP/APP	26.00 m
Summer draft	9.68 m
Deck space [l x w]	177.60 x 43.00 m
Deadweight	50,000 t
Trial speed	14.00 kn
Total installed power	16,470 kW

Main engines	4 x 3,840 kW
Main propulsion	2 x 5,250 kW fixed pitch propellers
Bow thruster	2 x 1,200 kW controllable pitch propellers
Stern thruster	2 x 1,475 kW controllable pitch propellers

### NAVIGATION EQUIPMENT

- Two DGPS
- One Doppler speed log
- Two echo sounders
- Navtex
- Weatherfax
- Two ECDIS
- Two radar
- One dual gyro compass
- SPOS - Ship Performance Optimisation System
- OCTOPUS - Octopus onboard system (ship motion monitoring and decision support system by Amarcn)

### DP SYSTEM, PRS SENSORS

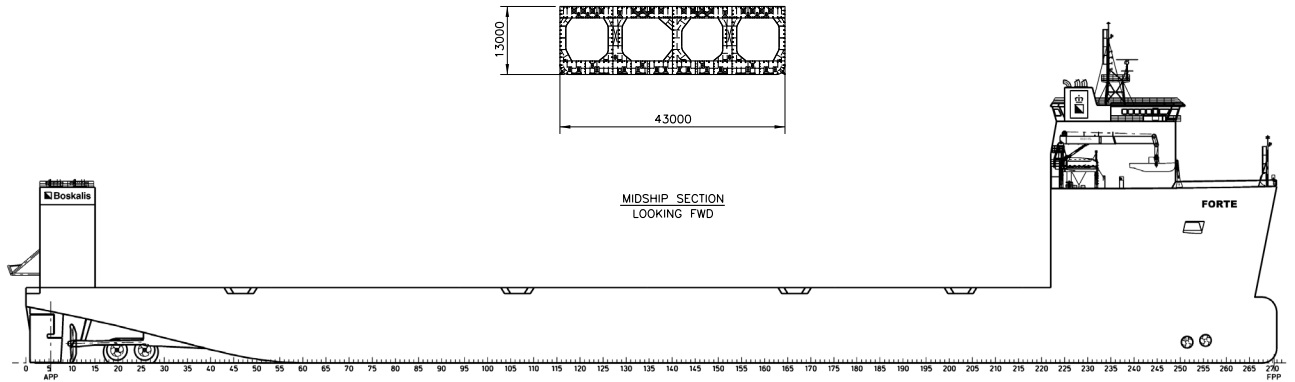
- DP system - Kongsberg Kpos-22
- 3 x DGNSS prs
- 1 x DGNSS heading
- 1 x CyScan prs
- 2 x Quadrans gyro
- 1 x Octans gyro
- 2 x MRU Seatec
- 1 x MRU Octans
- 3 x wind sensor

### COMMUNICATIONS EQUIPMENT

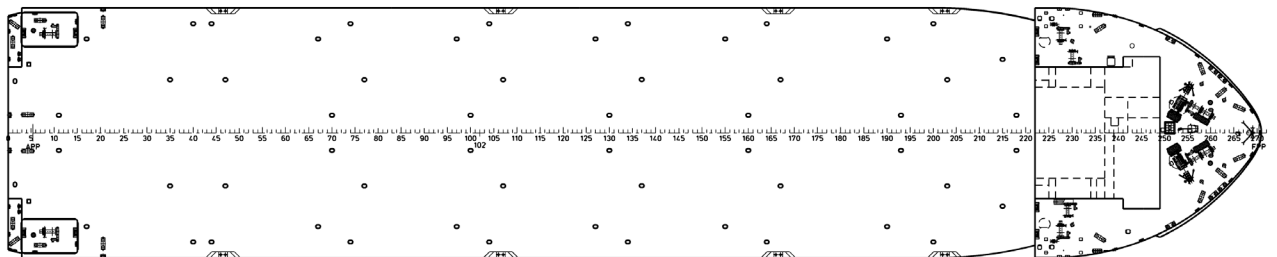
- Fully compliant with GMDSS A-3
- MF/HF
- VHF/UHF
- VHF DSC
- MF/HF DSC
- VSAT
- Fleetbroadband
- SATCOM-C
- SART
- EPIRB

### BALLASTING

- Four ballast/de-ballast compressors 6,600 m<sup>3</sup>/hr@ 2.5 bar
- Two main ballast pumps 1,500 m<sup>3</sup>/hr@ 35 m head
- Two main ballast pumps 250 m<sup>3</sup>/hr@ 35 m head



### SIDE VIEW



### TOP VIEW DECK LEVEL