

# EQUIPMENT SHEET

## GIANT 7 CABLE LAY BARGE



### CONSTRUCTION / CLASSIFICATION

Year of construction	2015
Classification	Lloyd's Register
Class notation	Crane Barge
Flag State	Belgium
Owner	Boskalis
Yard	Keppel Nantong Shipyard Co., Ltd.

### ACCOMMODATION

Cabins:  
73 berths. Messroom and galley, hospital, recreation room, office space, conference room, spacious bridge/control room

### BALLAST SYSTEM

4 x Ballast pump	1,600 m <sup>3</sup> /hr
Tank capacity	30,180 m <sup>3</sup>
Drinkwater capacity	855 m <sup>3</sup>
Sewage storage	1,979.2 m <sup>3</sup>
Fuel oil	1,056.4 m <sup>3</sup>

### MAIN DATA

Length o.a.	137.00 m
Breadth moulded	36.00 m
Depth moulded (main deck)	8.50 m
Draft maximum	6.45 m
Deadweight	18,661 t
Displacement at summer draft	28,357 t
Min. draft (as low as)	3.50 m

### CRANE

Crane	Liebherr BOS 35000-600
Main hook	600/1,000 t (optional)
Aux. hook	50 t
Rules and regulations	DNV, EN 13852-2
Certifying authority	DNV Standard for Certification No. 2.22 Lifting appliances and EN 13852-2:2004
Design temperature	-10°C
Ambient temperature	-25/+45°C
Wind speed operational	max. 25 m/s
Gust boom stowed	max. 63 m/s

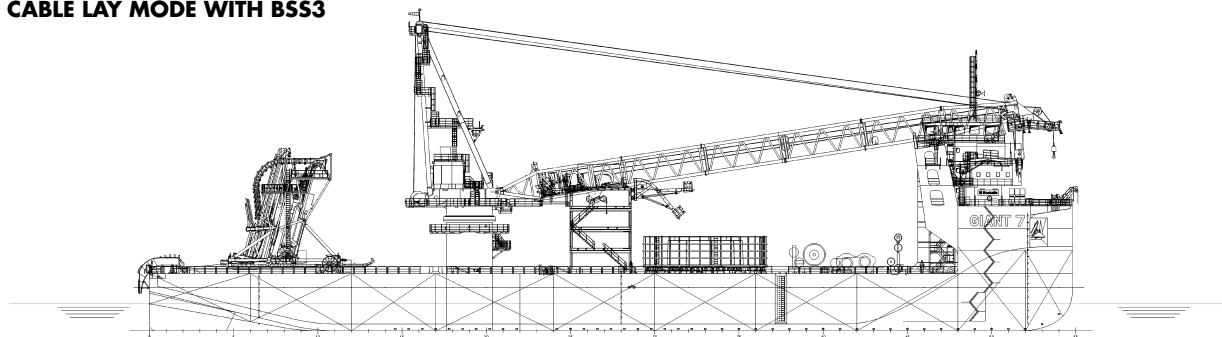
#### WINCHES / ANCHORS

Forward anchor winch (Main Pull)	120 t (Break = 132 t)
Mooring winch	4 x 75 t fwd, 4 x 65 t aft (Brake fwd = 140 t, brake aft = 120 t)
Mooring system	8 + 1 Point
Main Pull wire	1,850 m, 64 mm
Mooring winch wire	1,500 m, 52 mm
Anchors	Delta Flipper, 9 x 10 t

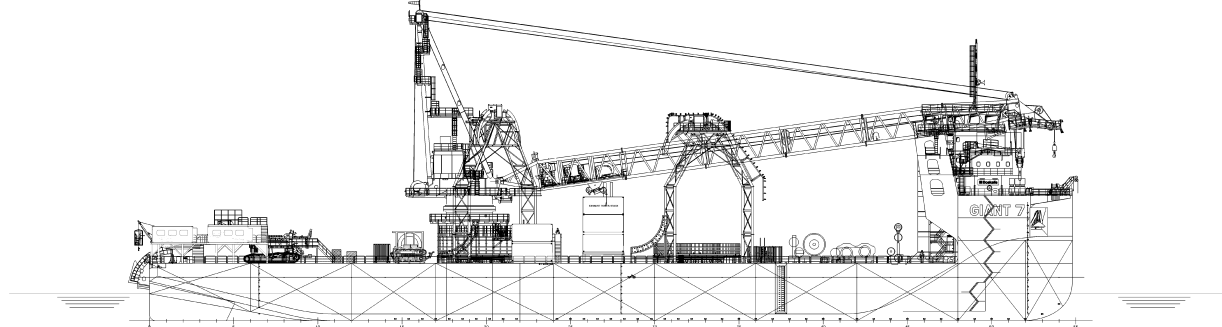
#### KEY VESSEL FEATURES

Available deck space (unmobilised)	~3,500 m <sup>2</sup>
Deck load max.	20 t/m <sup>2</sup>
Moon Pool	Yes/optional
Cable lay spread	Up to 5000 t turntable (AC) Up to 2 or 3 x 1,000 t turntable (DC)
Burial tools	Compatible with Boskalis burial tools (BSS3, CBT2400, Trenchformer)
Seabed Preparation	Compatible with Boskalis tools (Boulder clearance tool TREX-XL, Multimode Plough)

#### AC CABLE LAY MODE WITH BSS3



#### 2X DC CABLE LAY MODE WITH TRENCHER



#### 3X DC CABLE LAY MODE WITH BSS3

