

# EQUIPMENT SHEET

## BLACK MARLIN

SEMI-SUBMERSIBLE HEAVY TRANSPORT VESSEL



### CONSTRUCTION/CLASSIFICATION

Built by	China Shipbuilding Co Taiwan
Year of construction	1999
Classification	Bureau Veritas   ✕ HULL, ✕ MACH, Special Service Semi-submersible heavy lift vessel, unrestricted navigation. ✕ AUT-UMS (SS), MON-SHAFT, INWATERSURVEY, LI-HG-S1
IMO number	9186326
Flag	Malta
Port of registry	Valletta

### MAIN DATA

Length overall	217.80 m
Breadth moulded/max	42.00 m
Depth	13.30 m
Draft submerged at FPP/APP	23.30/23.30 m
Summer draft	10.08 m
Deck space [l x w]	178.2 x 42.00 m
Deadweight	57,021 t
Trial speed	14.50 kn
Total installed power	12,640 kW
Main engines	1 x 12,640 kW
Main propulsion	1 x 12,640 kW C.P. propeller
Bow thruster	2,000 kW

### NAVIGATION EQUIPMENT

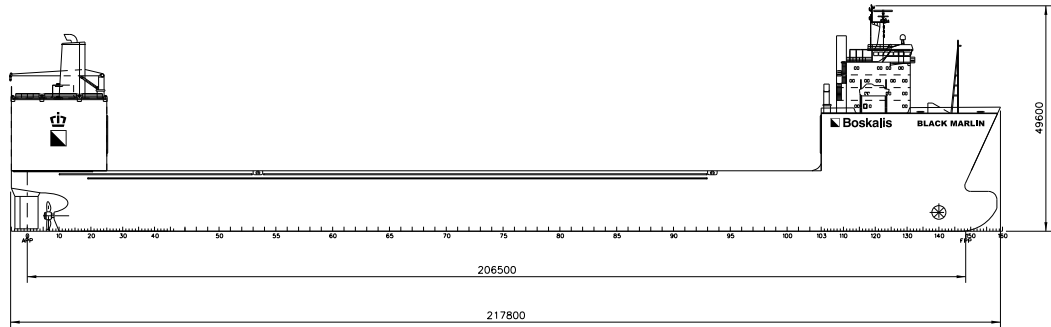
- Two radar, ARPA coupled
- GPS and SMIDS
- Echo sounders with fore and aft transducers
- Two gyro compasses
- ECDIS
- One doppler log
- SPOS - Ship Performance Optimisation System
- OCTOPUS - Octopus onboard system (ship motion monitoring and decision support system by Amarcn)

### COMMUNICATIONS EQUIPMENT

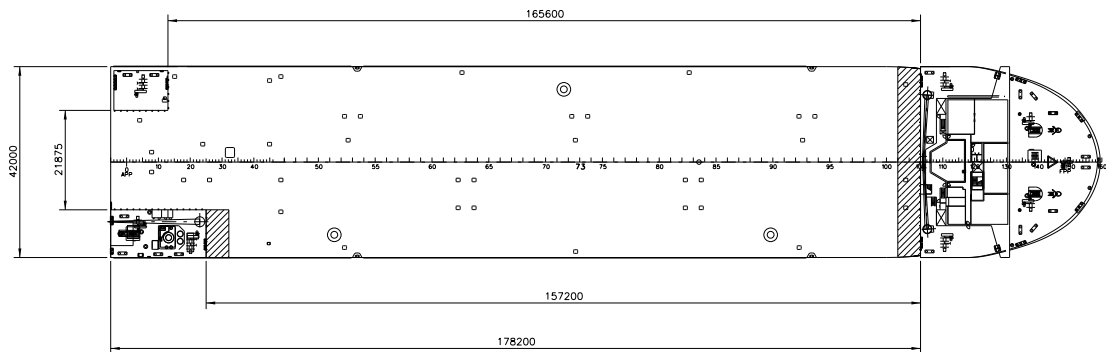
- Inmarsat B and C (telex/telephone/fax/data)
- VHF radio telephony
- Global wireless communication system
- Weather facsimile
- NAVTEX receiver
- GMDSS

### BALLASTING

- Four main ballast pumps 3,300 m<sup>3</sup>/hr@ 35 m head
- One fire gen. service pump 90 m<sup>3</sup>/hr@ 80 m head or 240 m<sup>3</sup>/hr@ 20 m head
- One fire bilge pump 90 m<sup>3</sup>/hr@ 80 m head or 240 m<sup>3</sup>/hr@ 20 m head
- One emergency fire pump 72 m<sup>3</sup>/hr@ 80 m head
- One gen. service s.w. pump 50 m<sup>3</sup>/hr@ 40 m head
- Two ballast stripping pumps 125 m<sup>3</sup>/hr@ 28 m head



**SIDE VIEW**



**TOP VIEW DECK LEVEL**