



CONSTRUCTION / CLASSIFICATION

Vessel built by	Drydock World, Singapore
Year of built	2011
Classification	Offshore support vessel (Anchor handling; Fire-fighting 1 -water spraying; Supply HNLS; TUG) Unrestricted navigation AVM-DPS, AUT-UMS, SYS-NEQ-1, SYS-IBS, MON-SHAFT, GREEN PASSPORT, CLEANSHIP, DYNAPOS AM/AT R
Flag	Belgian
Port of registry	Antwerp

FEATURES

Accommodation	100 berths, 14 x single cabins & 9 x double cabins & 17 x 4 person cabins, all with private facilities
Bunker capacity	1,430 m ³ incl. mud/brine/fuel tanks - Vessel without mud tanks: 678 m ³ - Mud/brine/fuel tanks: 752 m ³
Other tanks for cargo	Portable water: 1,088.8 m ³ Drill water: 2,661.5 m ³ (in ballast tanks) Chain locker: 797.4 m ³
Discharge capacity	
Potable water	250 m ³ /hr @ 9 bar
Drill water	250 m ³ /hr @ 9 bar
Fuel oil	250 m ³ /hr @ 9 bar
Positioning	Dynamic positioning, class II, K-POS 21

MAIN DATA

Length overall	93.4 m
Length BP	82.0 m
Breadth moulded	22.0 m
Depth moulded	9.5 m
Design draught	7.0 m
Summer draught	7.866 m
Maximum displacement	10,973 t
Lightship weight	6,888 t
Gross tonnage	6,776 GT
Netto tonnage	2,032 NT
Bollard pull	403 t
Deck area	815 m ²

PROPULSION (HYBRID)

Main engine	2 x MAK 16M32C, 10,728 BHP each
PTI Booster motor	2 x 3,000 kW = 8,046 BHP
Total BHP	29,502 BHP

THRUSTERS

Bow tunnel thruster	2 x 1,000 kW, Kamewa TT 2200 DPN CP
Bow azimuth thruster (FWD)	1 x Ulstein Aquamaster TCNS 92/62-220, 1,500 kW, Swing Up, CPP
Stern azimuth thruster (AFT)	1 x Ulstein Aquamaster TCNS 92/62-220, 1,500 kW, Swing Up, CPP
Stern thruster	1 x 1,000 kW, Kamewa TT 2200 DPN CP
Main propeller	2 x CPP, Ulstein

ELECTRIC POWER GENERATION

Main generator	4 x CAT 3516C rated 2,230 kW/690 V/60 Hz/3 Phh
Shaft alternator	2 x 4,000 kW/690 V/60 Hz/3 Ph
Emergency generator	1 x 370 kW/690 V/60 Hz/3 Ph

DECK EQUIPMENT

Tugger winch	2 x 24 t @ 22 m/min, Brattvaag
Tugger/mooring winch (AFT)	2 x 17 t @ 15 m/min, Brattvaag
Subsea crane	1 x HMC 3568 LKO 250-35 (1500-10), AHC crane, SWL: 150 t @ 12 m, wire length 3,000 msw
A Frame (optional)	1 x 250 t AHC capability A Frame for LAR of subsea equipment up to depth of 3,000 msw
Moonpool (optional)	7.0 m x 7.0 m

TOWING AND ANCHOR HANDLING EQUIPMENT

SPECIAL HANDLING DRUM

Brake/Pull	600 t brake, 500 t Pull
Drum capacity	14,800 m x 76 mm (Ø) Wire rope / 2,180 m x 203 mm (Ø) synthetic rope
Tugger/mooring winch (AFT)	2 x 17 t @ 15 m/min, Brattvaag
Tugger winch	2 x 24 t @ 22 m/min, Brattvaag

TOWING /WORKING DRUM (PORT SIDE)

Brake/Pull	750 t brake, 450 t Pull
------------	-------------------------

BOKA FALCON

MULTIPURPOSE DP2 OFFSHORE CONSTRUCTION VESSEL

Drum capacity	3,500 m x 76 mm (Ø) Wire rope / 490 m x 203 mm (Ø) synthetic rope
Chain gypsy	2 x 76 mm (Ø), 2 x 97 mm (Ø), 2 x 120 mm, 1 x 124 mm (Ø), 1 x 127 mm (Ø)

TOWING /WORKING DRUM (STARBOARD SIDE)

Brake/Pull	750 t brake, 450 t Pull
Drum capacity	3,800 m x 90 mm (Ø) Wire rope / 800 m x 203 mm (Ø) synthetic rope
Chain gypsy	2 x 76 mm (Ø), 2 x 97 mm (Ø), 2 x 120 mm, 1 x 124 mm (Ø), 1 x 127 mm (Ø)

AFT-DECK

Karm Fork	2 x Karm Fork, SWL: 800 t
Tow pin	4 x Tow pin, SWL: 800 t
Split stern roller	2 x 2.9 x 4.5 m (Ø), SWL: 750 t

SAFETY EQUIPMENT

Life raft	12 x 25 persons, Viking RFD
Rescue boat	1 x 15 persons, Norsafe MAKO 6,55, 246 hp
Davit	NDM PRHE 35, SWL: 3.5 t
Fire fighting	FIFI CLASS (1) with water spray). Pump: 2 x 2,095 m ³ /hr @ 32 m head. Monitor (water): 1 x 1,200 m ³ /hr @ 12 bar

ROV SYSTEM

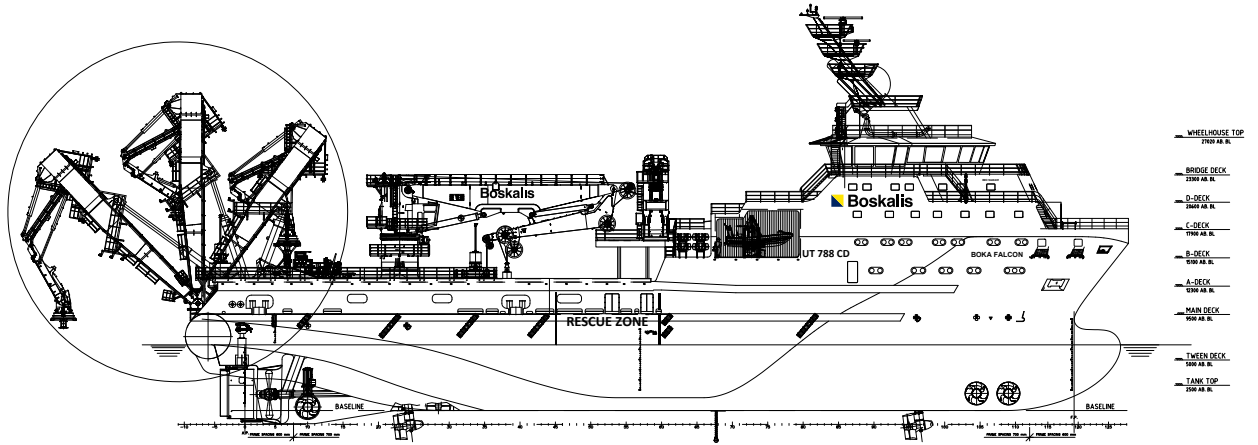
ROV	2 x Triton XLX 150 hp heavy work Class ROV, working up to depths of 3,000 m
-----	---

NAVIGATION EQUIPMENT

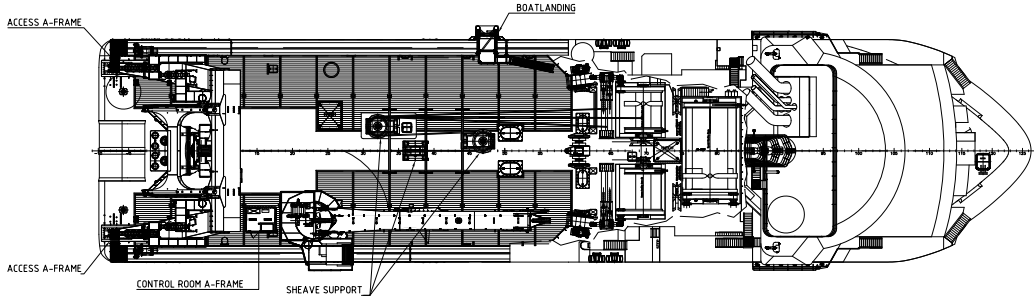
GMDSS (Area 3)	2 x Furuno RC-1800TVHF DSC
Gyro compass	3
DGPS	2
Joystick	RRM PosCon independent joystick fitted
Anemometer	2
ECDIS	2
SAT TV System	1
MRU5	3

COMMUNICATION EQUIPMENT

Inmarsat	2
VSAT and Starlink	1



SIDE VIEW



TOP VIEW