



CONSTRUCTION/CLASSIFICATION

Year of construction	2009
Classification	Lloyd's Register of Shipping ✕ 100 A1 Tug, ✕ LMC, UMS, FiFi-I
IMO number	9537513
Call sign	ORPI
Flag	Belgium
Port of registry	Antwerp
Trading area	Worldwide/unrestricted

DECK EQUIPMENT

Fore winch	Hydraulic, double drum - 200 t brake load line pull 50 t @ 10 m/min. on 1 st layer
Aft winch	Hydraulic, Waterfall (2 drums) - 200 t brake load. Upper drum - line pull 80 t @ 6.25 m/min. on 1 st layer. Lower drum - line pull 105 t @ 9.4 m/min on 1 st layer.
Stern roller	5.15 m x 1.25 m, 200 SWL
Tugger winch(es)	2 x 15 t @ 15 m/min.
Towing pins	2 x Karmoy 300 t SWL
Stopper pins	2 x Karmoy 160 t SWL
Crane	2 t s WL @ 12 m outreach

MAIN DATA

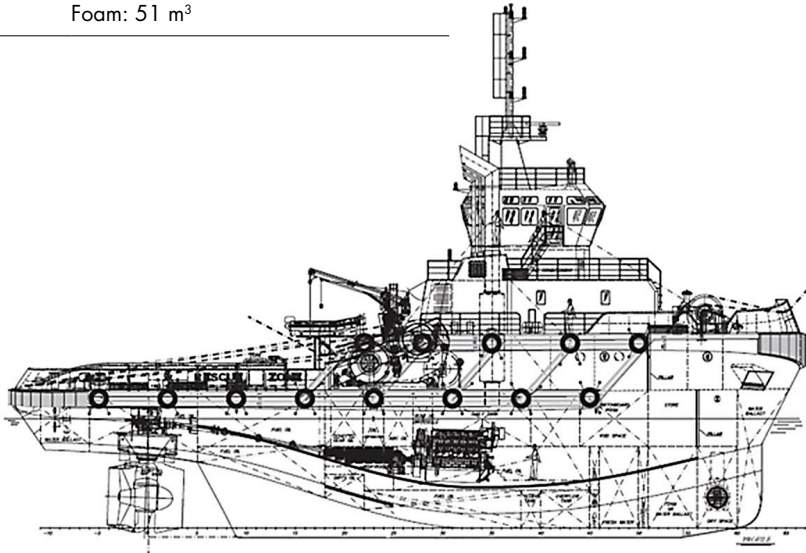
Gross tonnage	810 GT
Length overall	40.65 m
Breadth moulded	12.70 m
Depth moulded	6.90 m
Max. draught	6.65 m
Design draught	5.50 m
Bollard pull ahead	90 t
Speed max	13 kn
Speed economic	10 kn
Max deck cargo	51 t/m ²
Deck area (aft)	125 m ²

PROPULSION AND MAIN SYSTEMS

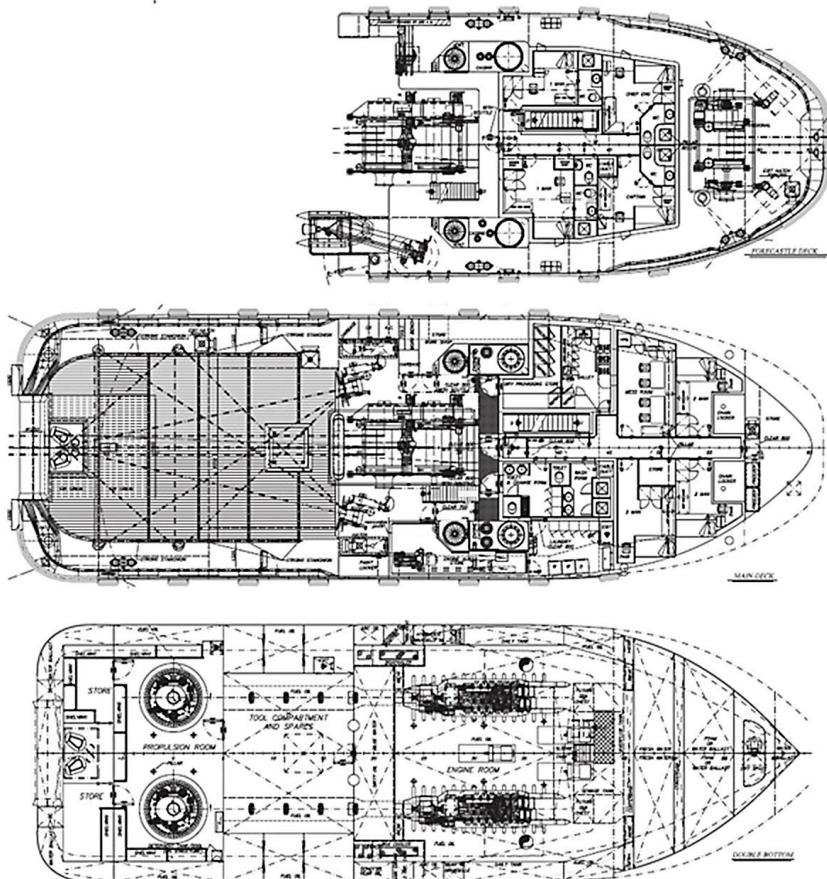
Main engines	2 x ABC 12V DC
Total power	5,200 kW
Propulsion	2 x fixed pitch ASD propeller
Bow thruster	1 x 300 kW
Fire fighting	2 x 1,200 m ³ /hr

FEATURES

Accommodation	10 berths, 4 x single and 3 x double cabins
Bunker capacity	Fuel: 365 m ³ MGO Fresh water: 64 m ³ Foam: 51 m ³



SIDE VIEW



TOP VIEW DECK LEVEL