

EQUIPMENT SHEET

ASIAN HERCULES II
3,200 TONS FLOATING SHEERLEG



CONSTRUCTION / CLASSIFICATION

Year of construction	1997
Classification	ABS A1(E) AMS
Call sign	P C I W

FEATURES

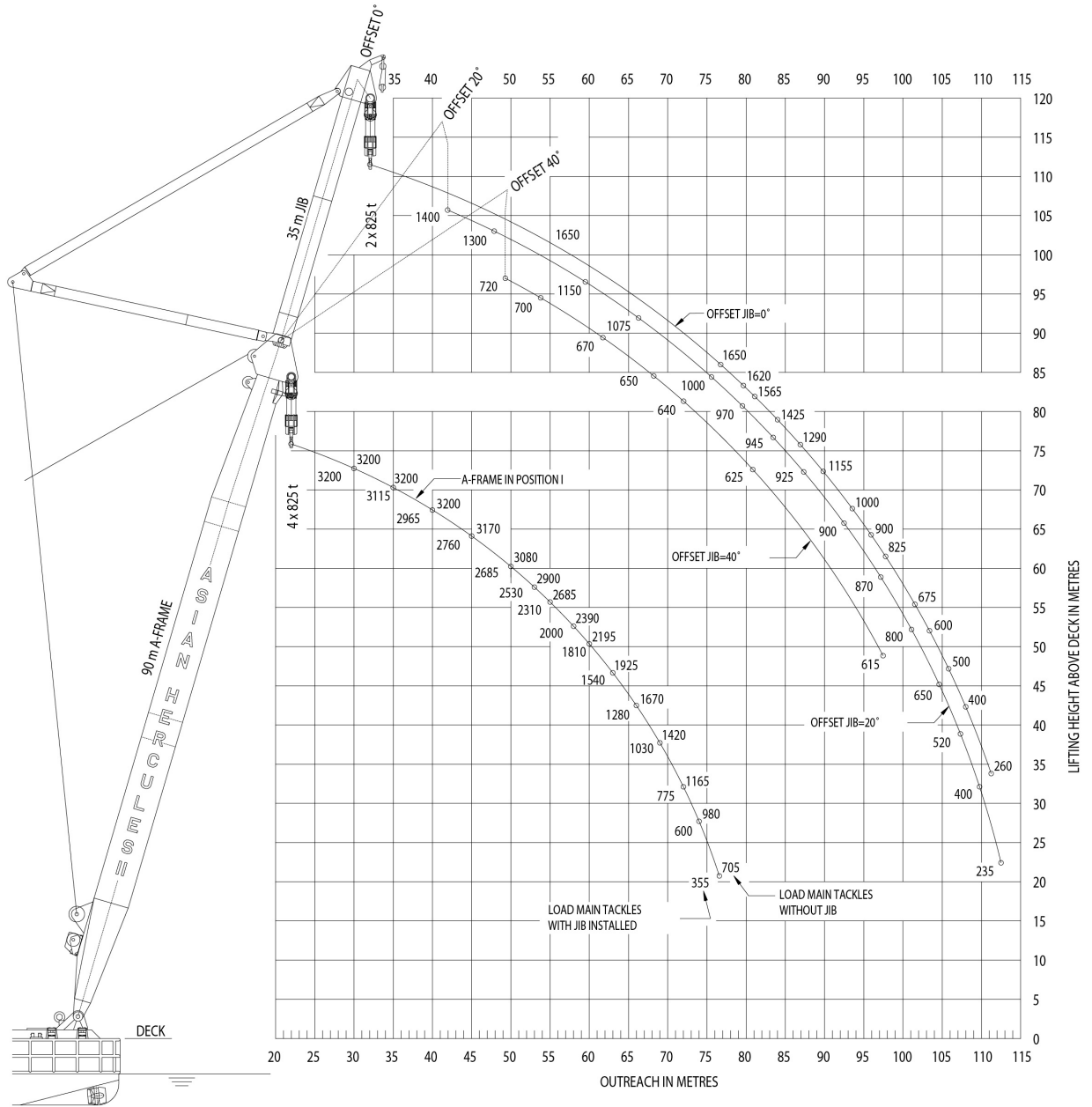
Accommodation for 24 persons (can be increased)

MOORING WINCHES

8 Point mooring	30 t cap. 1,000 m of 44 mm Ø wire rope
-----------------	--

MAIN DATA

Gross tonnage	10,560 GT
Nett tonnage	3,168 t
Length overall	91.35 m
Beam overall	43.35 m
Min. draught	2.75 m
Max. draught	8.50 m
Sailing height min.	56.00 m
Propulsion	4 x 813 kW Azimuth
Deck load	15 t/m ²



CAPACITY DIAGRAM

All loads are in metric ton [t] and for inland waters.

All load capacities are without traverses.

The following load capacities are on request:

- A-frame in position II and III
- Combined lifting with both main- and jib tackles
- Offshore

Boskalis
PO Box 43
3350 AA Papendrecht
The Netherlands
T +31 78 69 69 000
offshore.energy@boskalis.com
www.boskalis.com/offshore