
SPECIFICATIONS

Total installed power	1,800 kW
Water depth operating range	4 - 1,000 m
Dimensions (core vehicle)	Length: 8.5 m Width: 8.3 m Height: 6.4 m
Weight in air (depending on configuration)	64 - 85 t
Submerged weight (depending on configuration)	55 - 70 t
Operations	Pre-Lay and Post-lay Burial capabilities in jetting, cutting or hybrid configuration
Min. soil bearing capacity	19 kPa
Max. roll & pitch	±10°
Max. current	2 kn during L&R 4 kn during trenching
Speed on tracks	0 - 1,000 m/hr

CASSETTE 1A-CHAIN CUTTER WITH REAR JETTING

Power	400-800 kW chain cutting (installed) 600-1,200 kW jetting (installed) flexible utilization of power
Soil strength	100 kPa - 5/40 mPa (chisel/conical picks)

Configuration	Segmented Boom for trench depth variations between 1.3 m and 3.3 m 520 mm wide trench or 720 mm wide trench for various product sizes	
Jetting performance	7-15 bar	
Trench depth	max. 3.3 m	
Max. product diameter	Up to 500 mm	
Min. bending radius	Up to 5 m	

CASSETTE 1B-PRE-JET WITH DEEP BURIAL REAR JETTING

Power	600 - 1,200 kW aft jetting (installed) 300 kW pre-jetting frontal (installed) 150 kW pre-jetting backwash (installed)	
Trench depth deep burial	max. 5.3 m	
Jetting performance	7 - 15 bar 4 - 6 bar 1.5 - 3.5 bar	aft jetting pre-jetting frontal pre-jetting backwash
Max. product diameter	500 mm	
Min. bending radius	5 m	

CASSETTE 2-CHAIN CUTTER WITH INTEGRATED JETTING AND CLOSED DEPRESSOR

Power	400 kW chain cutter (installed) 600-1,200 kW integrated jetting
Soil strength	< 650 kPa
Configuration	Mechanical cutter with integrated jetter and closed depressor
Jetting performance	7-15 bar (chain and cooling functions)
Trench depth	max. 2.3 m
Max. product diameter	300 mm
Min. bending radius	4 m

HYDRAULIC SYSTEM

Power	4 x 450 kW HPU
Max. track effort (soil depending)	Up to 50 t
Thrusters	2 x 630 kgf

SUBSEA ELECTRONICS

Electronic pod	1 atmosphere pressure vessel
Depth rating	1,000 m
Test pressure	1.25 x working pressure
Data transmission	Fibre optic multiplexer

SUBSEA SURVEILLANCE

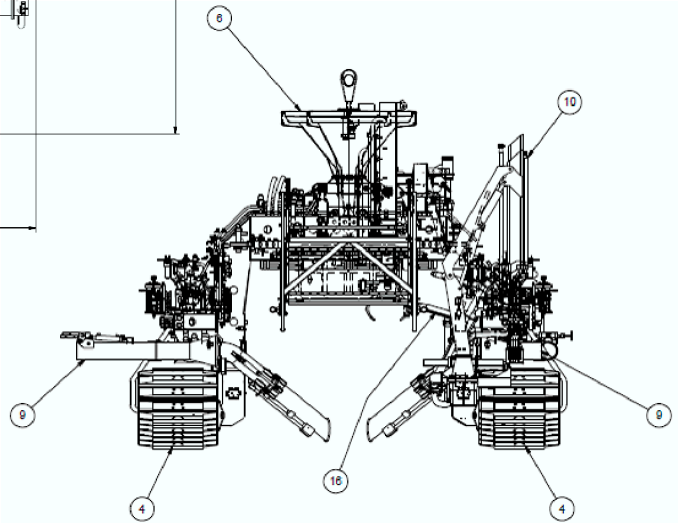
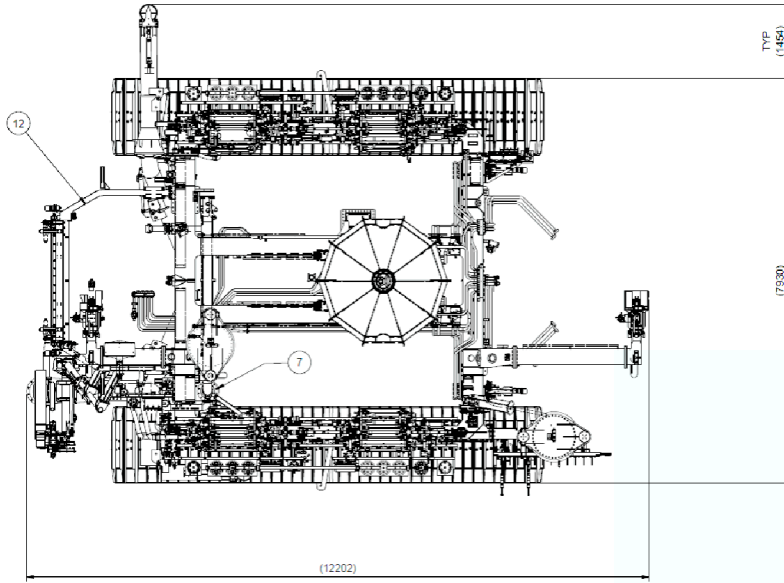
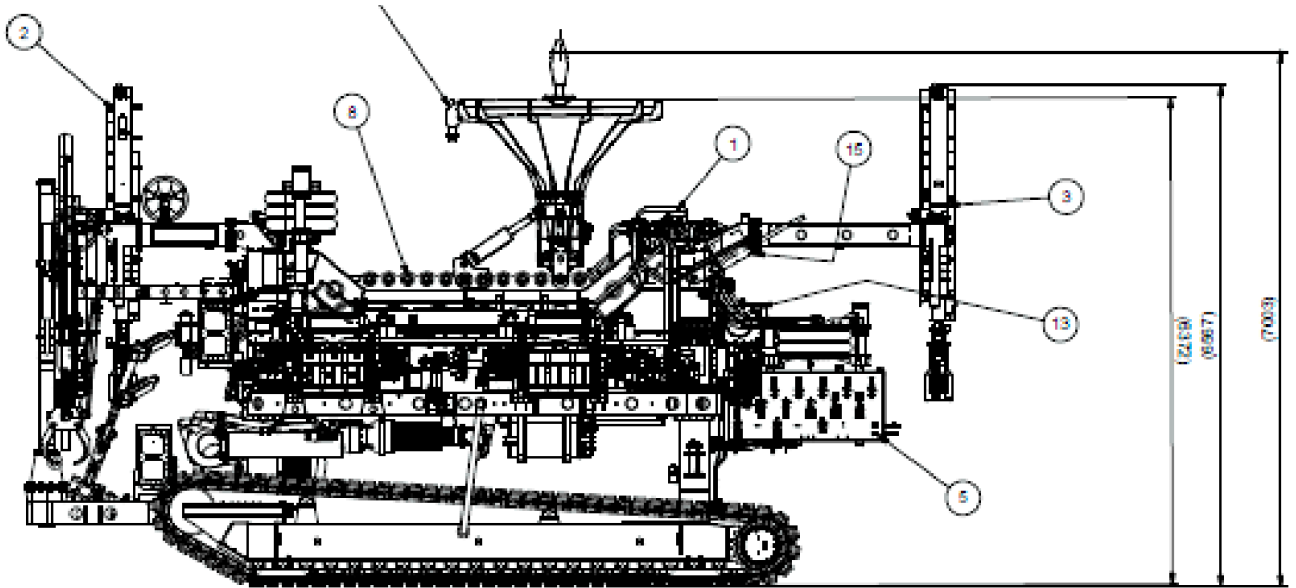
Camera's	4 x Kongsberg OE14-366A Colour zoom 1 x Kongsberg OE13-124 Low light 3 x Kongsberg OE14-376 Mini colour
Lights	12 x Bowtech dimmable LED
Pan & tilt	3 x Kongsberg OE10-104 pan and tilt 2 x Kongsberg OE10-103 rotator
Sonars and profilers	8 x Kongsberg MS 1171 Profiler 2 x Teledyne Blueview OAS 2 x R2Sonic 2020 MBES 2 x Aris Explorer 3000 Imaging Sonar
Hydrophone	Teledyne AQ17

SUBSEA INSTRUMENTATION

Position, heading, roll & pitch	iXblue Rovins Teledyne TOGS Subsea DGPS (for beach/ shallow water operations)
Altitude + depth	2 x Valeport VA500P 1 x Mini SVS-P 1 x Kongsberg 1007D
Trench & product sensing	Cable Feelers in fore and aft bellmouth. TSS440 and/or TSS350. Cable detect sensors in rear jet tool Tool and depressor
Trencher geometry	In-cylinder transducers and rotary sensors for redundancy
DVL	RDI DVL 1,200 kHz

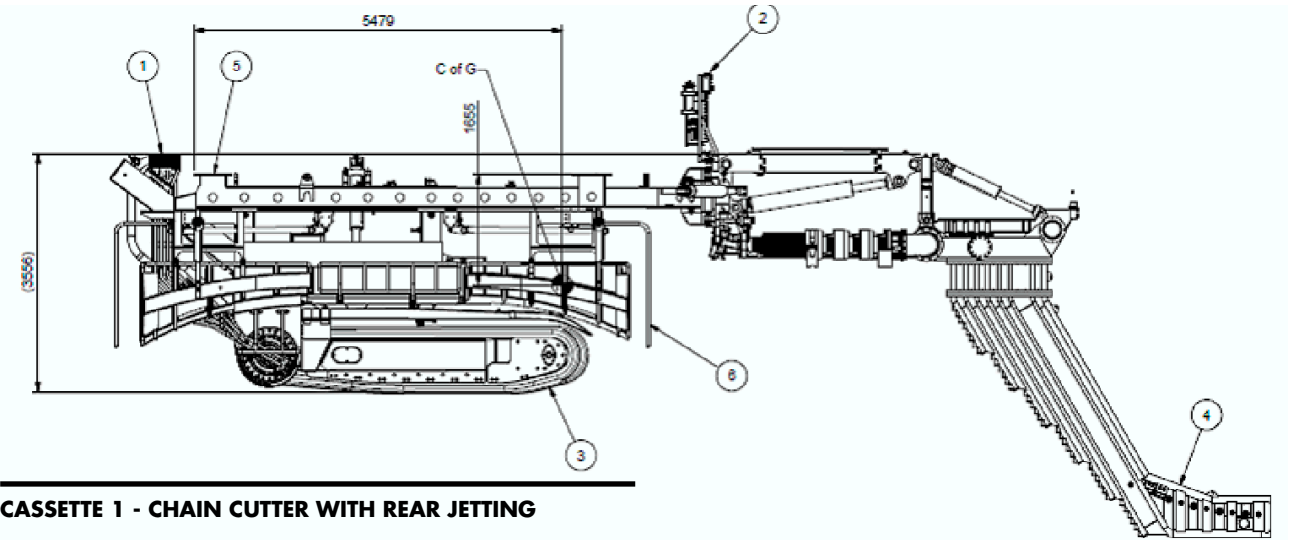
OTHER EQUIPMENT

Container spread	20 ft Control container 2 x 20 ft Power container 3 x 20 ft Workshops 3 x 20 ft Spares
Supporting	Maintenance skid with trolley and platforms for safe access. Stabilising Frame in 100 t SWL A-Frame for Launch and Recovery

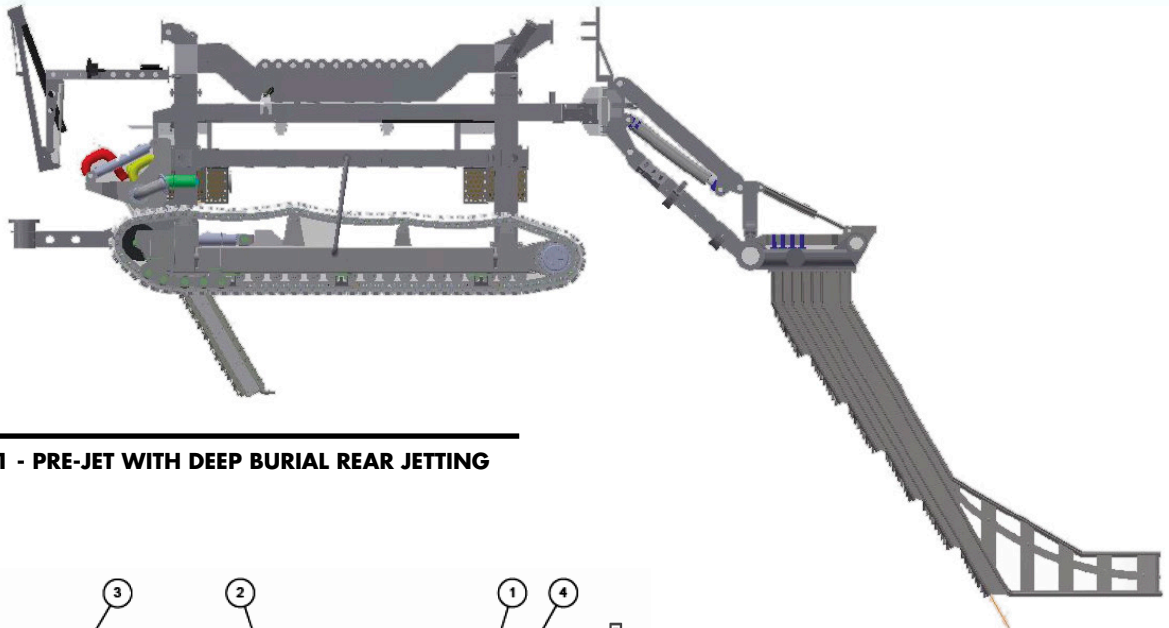


CBT2400 CORE VEHICLE

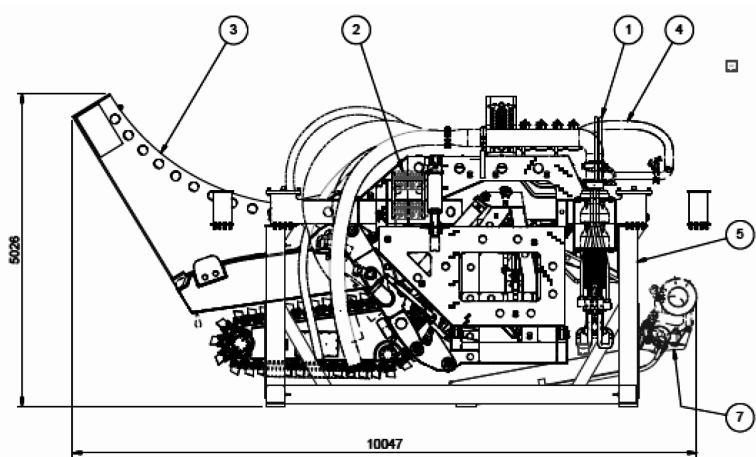
Alternative configurations available on request



CASSETTE 1 - CHAIN CUTTER WITH REAR JETTING



CASSETTE 1 - PRE-JET WITH DEEP BURIAL REAR JETTING



CASSETTE 2 - CHAIN CUTTER WITH INTEGRATED JETTING AND CLOSED DEPRESSOR

Alternative configurations available on request