



CONSTRUCTION / CLASSIFICATION

Vessel built by	Metalships & Docks, S.A. Vigo Pontevedra, Spain
Year of construction	2012
Classification	BV ✕ HULL ✕ MACH Special service - Construction Support vessel SP, Unrestricted navigation, COMF-VIB 3, ✕ AUT-UMS, ✕ SYS-NEQ-OSV, CLEAN-SHIP, ✕ HEL, ✕ DYNAPOS AM/AT R
IMO	9433183
Call sign (flag)	9HA2997 (Malta)
Port of registry	Valletta

FEATURES

Accommodation	129 berths, 15 x 1 man cabins and 57 x 2 man cabins
Client & office facilities	1 x office on 01 ACC 1 x representatives office on 02 ACC 1 x inspector's office on 02 ACC 1 x conference room on 03 ACC (PRT) 1 x field engineer's office on 03 ACC (STB)
Hospital	2 berths
Mess room	58 seats
Recreation room	43 seats
Internet room	4 seats
Conference room	10 seats

Helideck reception room	10 seats
Recreation facilities	Gymnasium, sauna

CAPACITIES

Bunker capacity	Approx 2,000 m ³ @ 100%
Potable water	Approx 832 m ³ @ 100%
Ballast water	Approx 7,142 m ³ @ 100% m ³
Lube oil and hydraulic oil	Approx 158 m ³ @ 100%
Freshwater gen.	2 x 25 m ³ /day

MAIN DATA

Gross tonnage	11,277 GT
Net tonnage	3,383 NT
Length overall	132.44 m 135.65 m (with helideck)
Length BP	120.4 m
Beam	30.0 m
Max. draft	6.85 m
Depth main deck	9.70 m
Deadweight	9,800 t
Main deck area	2,000 m ²
Deck strength over all	10 mt/m ²
Deck hatches	4

PROPULSION AND MAIN SYSTEM

Main engine (electric driven)	Wärtsilä, 4 x 3,360 kW, 13,440 kW, 18,278 BHP
Propulsion	2xAzipull thrusters, RR Ulstein, 120 CP, Aquamaster, each 3,500 kW
Bow thruster	1 x RR swing up thruster 1,500 kW 2 x RR tunnel thruster 1,500 kW each

ELECTRIC POWER GENERATION

Main generator	4 @ 3,330 kW Wärtsilä
Aux generator	1 @ 1,600 kW Wärtsilä

DYNAMIC POSITIONING SYSTEM

DP System	DP2 - Kongsberg Maritime K-Pos 21
Class	BV DYNAPOS AM/AT R, IMO Class 2
Reference system	1 x Kongsberg HiPap 500 1 x Kongsberg Seatex DPS 132 DGPS 1 x Kongsberg Seatex DPS 232 DGPS 1 x Bandak Light Weight Taut Wire Mk 15-300 1 x Fan Beam MK4.1 2000 3 x MRU 3 x Gyro Compass-C-Plath Navigat X
ERN	99, 98, 96, 83

ROV SYSTEM

ROV (optional)	Not fitted at the moment
----------------	--------------------------

DECK EQUIPMENT

Main crane	NOV Crane 400 mt 1 @fixed boom AHC 440 ST @ 49 ft (2 fall), 1,969 ft wire rope; (1 @ fixed boom 400 mt @ 15 m (2 fall), 600 m wire rope)
Auxiliary hoist	Auxiliary Hoist 50 mt @ 42 m, 300 m wire rope
Aft. crane	NOV Knuckle Boom Crane 100 mt Knuckle Boom AHC 110 ST @ 52 ft, 10,794 ft wire rope; aux hoist 11 ST @ 112 ft; 1,312 ft wire rope (1 @ knuckleboom AHC 100 mt @ 16 m, 3,290 m wire rope)
Auxiliary hoist	Aux hoist 10 mt @ 34 m, 400 m wire rope
Provision crane	2 x TTS, SWL 2 t @ 12 m, 20 m wire rope
Moonpool	closed
Mooring winch FWD	2 x 17 t (IBERCISA)
Mooring winch AFT	1 x 15 t (IBERCISA)
Mooring winch bollard AFT	2 x 10 t (IBERCISA)
Stabilising equipment	1 x anti heeling system

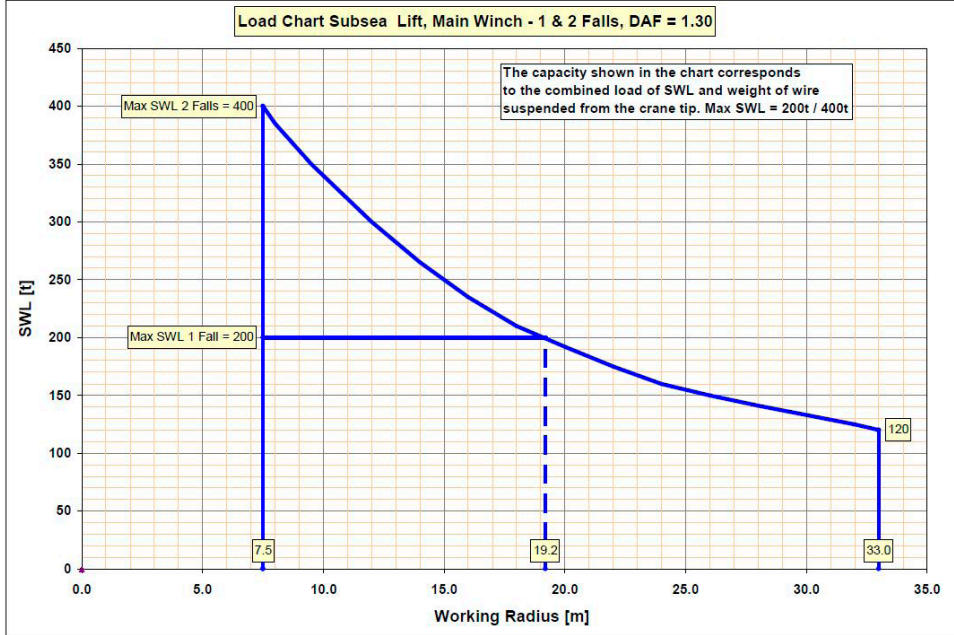
HELIDECK

Size	Actual diameter: 26.40 m D Value: 21 T Value: 12.8 t Deck height above sea level: 21.8 m @ 6.85m draft Suitable for Super-Puma AS 332/ Sikorsky S-92 (12.8 t)
------	---

V-4746-Z-RD-010

NORTH OCEAN 105 - 400T CRANE

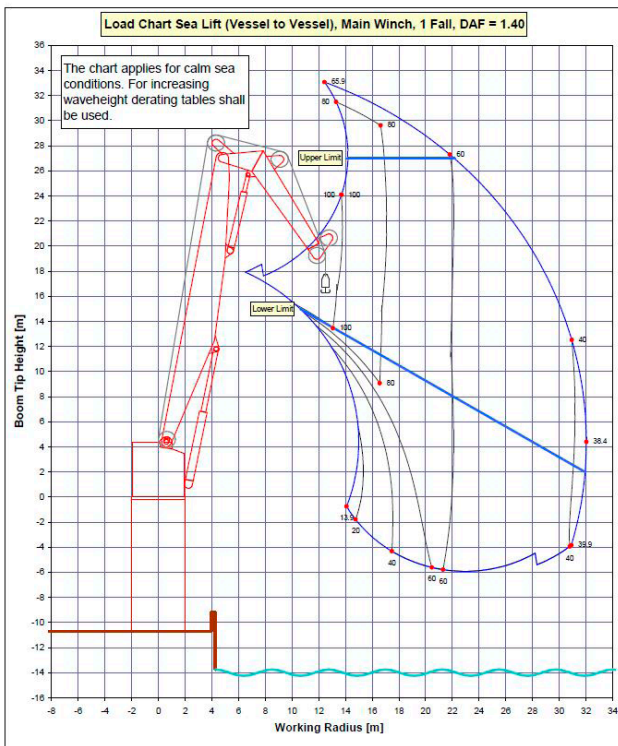
LOAD CHART



V-4747-Z-RD-010

NORTH OCEAN 105 - 100T CRANE

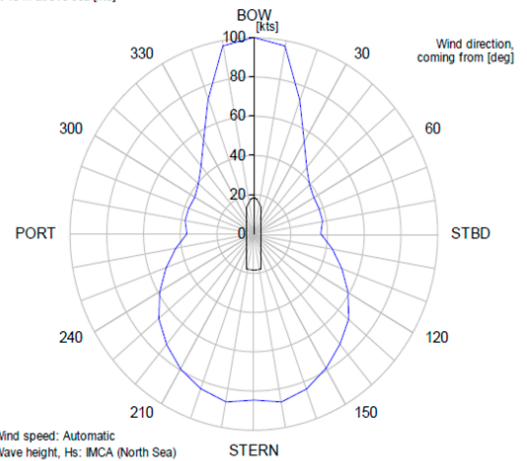
LOAD CHART



5.1 Case 1 - Case 1: Optimum use of all thrusters (T1-T5 running), Current speed = 1.5kts

VARIABLE WIND AND WAVES
Limiting 1 minute wind speed, at 10 m above sea [kts]

Thrusters active: T1-T5
Rudders active: None

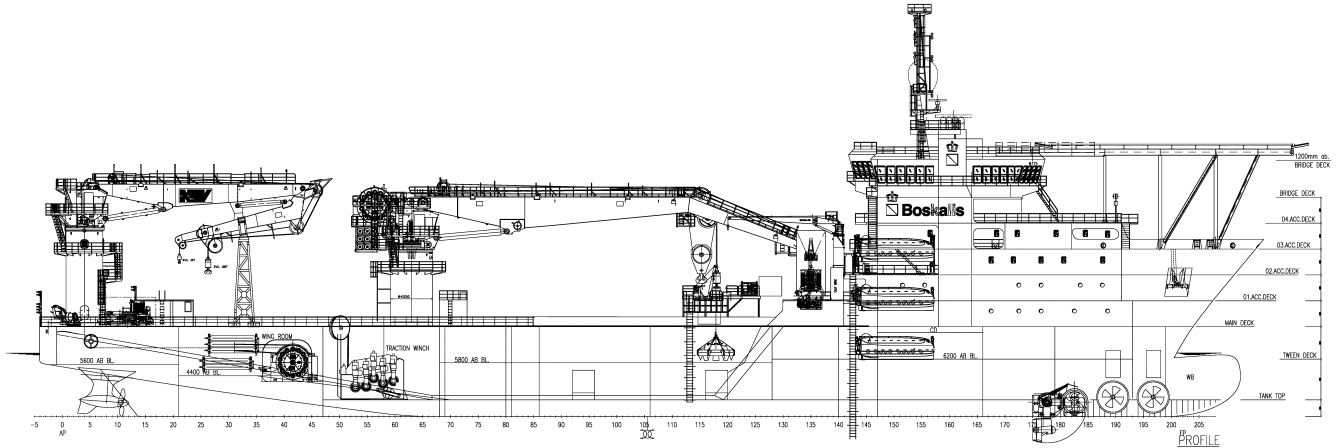


Wind speed: Automatic
Wave height, Hs: IMCA (North Sea)
Wave period, Tp: IMCA (North Sea)
Wave direction offset: 0 deg
Wave spectrum: JONSWAP ($\gamma = 3.3$)

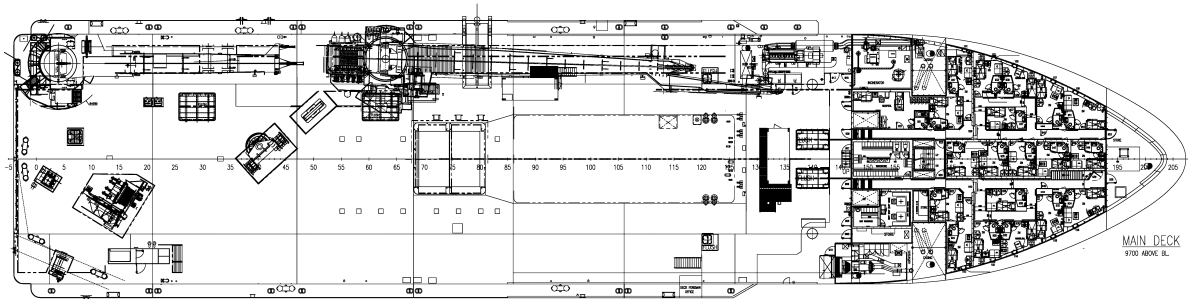
Rotating tidal current: 1.50 knots
Rotating wind induced current: 0 % of wind speed

Available thrust					Power configuration		
Thr. ID	Max. rel. thrust [%]	Max. forward thrust [kN]	Max. reversed thrust [kN]	Max. power [kW]	Bus name	Connected thrusters	Available power [kW]
T1	100	22.4	-22.4	1500.0			
T2	100	22.4	-22.4	1500.0			
T3	100	26.5	-16.3	1500.0			
T4	100	61.9	-38.1	3500.0			
T5	100	61.9	-38.1	3500.0			

Boskalis
PO Box 43
3350 AA Papendrecht
The Netherlands
T +31 78 69 69 000
offshore.energy@boskalis.com
www.boskalis.com/offshore



SIDE VIEW



TOP VIEW DECK LEVEL